

# WEATHER

	Min.	Max.	Precip.
Monday, Oct. 6	49	63	0.01
Tuesday, Oct. 7	59	67	0.00
Wednesday, Oct. 8	55	63	0.08
Thursday, Oct. 9	46	61	0.00
Friday, Oct. 10	41	60	0.00
Saturday, Oct. 11	41	60	0.00
Sunday, Oct. 12	35	63	0.00

By H. K. L.

# The Chelsea Standard

## QUOTE

"Thou canst not judge the life of man until death hath ended it."  
—Sophocles.

ONE HUNDRED-SECOND YEAR—No. 17

14 Pages This Week

CHELSEA, MICHIGAN, THURSDAY, OCTOBER 14, 1971

15c per copy

SUBSCRIPTION: \$4.00 PER YEAR

## Homecoming Plans Started At High School

Chelsea High school Homecoming coming Friday, Oct. 22! And, always, an activity filled week planned.

On Monday, the Seniors will be tested against the Sophomores, and the Juniors against the Freshmen, in a tug-of-war which will begin at 7 p.m. on the baseball field. Following the initial match, the winners will compete for the championship.

On Tuesday, all four classes will be busy working on their hall decorations, and other in-school projects. The class making the most spirited contribution to the week's activities will receive a trophy presented during the half-hour Friday night.

The ladies will have their turn in the football field this week. On Wednesday, Oct. 20, at 8 p.m. the Junior Girls and the Freshmen girls will play touch football. A similar contest between Senior girls and Sophomore girls will follow at 8 p.m.

On Thursday night, the two winners of Wednesday night's games will meet at 7:30 p.m. on the athletic field. The final touch-football game will be preceded by a snake dance which will begin at the Municipal parking lot at 6:30 p.m.

On Friday, there will be the traditional pep rally, the Homecoming game between Chelsea and Dundee at 7:30 p.m., and following the game, a dance, featuring "The Up" from Ann Arbor. All Chelsea alumni are invited to the dance which will begin as soon as the game is completed.

This week, each class is selecting two Homecoming Queen candidates. The candidates will ride in convertibles during the snake dance (Thursday), and will be introduced before the final touch-football game gets underway.

The Queen, chosen by the Varsity football team, will be crowned (Continued on page three)

## Open House Slated Oct. 19 At High School

An open house for parents of Chelsea High school students will be held Oct. 19 at 7:30 p.m. The date set for the open house coincides with the observance of National Education Week.

During the evening, a complete, but abbreviated, day of classes will be held, allowing parents to visit each class their son or daughter attends in the normal course of a school day.

During the class sessions, which will last 10 minutes, the teachers will explain something about the subject and the way in which it is taught, the marking basis, and how the teacher may be reached during the school day.

According to high school counselor George Bergman, students are being urged to make out a complete class schedule for their parents, listing the hours, subjects—including study halls—teachers, and room numbers for each period in the day.

The evening will begin with a 10-minute general instructional meeting in the high school auditorium. Classes will begin meeting at 7:50 p.m., with a five-minute "passage time" interval between each class. During their child's study hall period, Bergman said, parents are welcome to have coffee in the school cafeteria.

Following the abbreviated school day—at approximately 9:30 p.m.—there will be a coffee hour in the cafeteria.

Bergman said that discussions about an individual student's progress are not encouraged during the evening, adding that parent-teacher conferences for that purpose may be arranged. Bergman also said that grades for the first six-week marking period will not be available at the open house, but should be ready within the two or three days following.



FINGER LICKIN' GOOD: A line of hungry folks looks on as Chef Jim Gaken (left) and barbecue chairman Bob Updegraff place a rack of chickens on a holding pit. The birds were kept warm on the holding pits until they could be boxed by Jaycee wives and Auxiliary members like Mrs. Art Steinaway (right).



THE ONLY FIRE IN CHELSEA last week was the one at the Jaycees 16th annual Chicken Barbecue and color tour held last Saturday. Jaycee president Dave Rowe (left foreground) and Joe Verway look on as Walt Brown (left), Dan Eder, and Mike Eubanks (back to camera) move a rack of birds. Vasant Bahurid and Dick Cail (left and right, foreground) place a rack of uncooked birds on the fire, and Glen Weir and Terry Rickerman (left and right, background) tend cooking chickens.

## Commissioners Okay Plans for Proposed Park

### Controversial 4,080-Acre Park Vote Split 8 to 5 Along Territorial Lines

The controversial 4,080-acre Mill Creek Park proposed by the Huron Clinton Metropolitan Authority (HMCA) for Lima and Freedom townships received endorsement from the Washtenaw county Board of Commissioners at their regular meeting Tuesday morning.

The motion endorsing the park plan was approved by an 8 to 5 vote after a motion to deny the support failed by a 9 to 4 margin.

Votes on the proposal to deny approval, and the resolution ultimately approved, came after an hour long debate by the commissioners before an audience of 25 to 30 people.

Prior to the debate presentations both in favor of and against the building of the park were presented.

## Thomas Stock Buys Chrysler Dealership

Thomas O. Stock, a Chelsea resident since 1962 and a former vehicle test engineer with the Chrysler Proving Ground, has purchased G.A. Sales & Service from George A. Staffan.

Stock took possession of the dealership, which will now be known as Village Motor Sales, Inc., Monday, Oct. 11.

Village Motor Sales has been designated by Chrysler Motor Corporation as the official franchised dealer for Chrysler, Plymouth, Imperial, Cricket and Dodge cars, as well as Dodge trucks, in the Chelsea area.

The franchise was originally obtained by Staffan eight years ago.

Stock, who lives with his wife, Jeanne, and their five children, at 4000 Muchbach Rd., is a graduate of Eastern Michigan University, and brings 11 years of dealership experience to his new enterprise.

He taught automotive and math courses in the Jackson Community College apprentice program, has been involved with Cub Scout activities for several years, and has coached Babe Ruth League baseball for the summer recreation program for three years.

The Stock family was host to Youth for Understanding teenage exchange student Sylvie Toinard, of Lyon, France, for one year.

Staffan said he now plans to devote his time to the expansion of the North American Marketing Co., which currently distributes two-cycle fuel in Michigan, into the Wisconsin market. Staffan plans to remain in Chelsea while he pursues his marketing intercesses. "I'm glad to have been in (Continued on page six)

## Bulldogs Hold Off Lincoln for 31-24 Victory

Playing under the lights on a soggy Lincoln field in weather not meant for football, the Chelsea Bulldogs defeated Lincoln's Rail-splitters, 31 to 24, Friday night, in what could be one of their most critical wins of the season.

Both teams were undefeated going into the game, with Lincoln reported to be one of the toughest teams in the Southeastern Conference this year. Now only Chelsea and Novi have perfect records, and they will meet there this Friday night.

Chelsea, winner of three consecutive SEC titles under the leadership of head coach Phil Bareis, was the first team on the scoreboard as Tim Lancaster ran eight yards early in the first quarter. Lancaster's score followed a Chelsea fumble recovered by Lincoln and a Lincoln fumble recovered by Chelsea on the eight.

Chelsea scored again as Jeff Hughes made a spectacular 79-yard run around left end for the second TD. A trap block by Randy Seitz sprang Hughes loose for the run. Tom Lixey ran for the two-point conversion to make the score 14 to 0.

Lincoln came to life following the two Chelsea TD's. They returned Chelsea's kick-off almost to the mid-field line, and then Lincoln halfback Don Reed ran 65 yards for their TD.

Chelsea increased the score to 17-6 when Steve Knickerbocker kicked his first field goal of 30 yards late in the second quarter.

Chelsea scored again early in the second half, after the Bulldog defense forced Lincoln to punt. Jeff Hughes snared the kick and handed off to Mark Collins, who ran 68 yards for a touchdown before (Continued on page three)

## Trick or Treat For UNICEF Slated Oct. 24

The annual Halloween-time canvass for the United Nations Children's Fund—UNICEF—will be held Oct. 24 from 2 to 3 p.m.

The UNICEF drive, sponsored locally by Church Women United, is celebrating its 25th anniversary this year. During its existence, UNICEF has provided for one hundred million needy children in dozens of developing countries. The ultimate goal of the Children's Fund is "A Future for Every Child."

Those wishing to participate in the annual "Trick or Treat for UNICEF" on Oct. 24 may obtain UNICEF canisters from the various Chelsea churches on Oct. 17. Canisters may also be obtained at the McKune Memorial Library.

Following the canvass on Oct. 24, the canisters will be returned to the United Methodist church basement social center. Treats for the canvassers will be prepared by Mrs. William Rooke.

In addition to the canvass, the following empty packages are being collected: Hunt's Snack Pack empty cartons, Welch's jam, jelly and preserve labels, all Bird's Eye vegetable cartons, Pals and Pals (Continued on page five)

## More Than Half of Chest Funds Remain in Chelsea

Do you wonder where your Community Chest Contribution goes after it leaves your pocket and enters the campaign coffers?

According to Robert Thornton, chairman of the Chest Budget Committee, more than 55 percent of the money contributed to the local campaign—some \$14,270 this year—never leaves Chelsea, and Chelsea residents also benefit from Michigan United Fund agencies which receive contributions from the local Chest.

The Community Chest budget is established after the budget committee studies the requests made by the 12 agencies with which it works directly, and interviews each agency with an eye to its influence on the community and its accomplishments, Thornton said.

The agencies are screened in May, and the budget established during the summer.

This year the Chest received requests totaling \$32,352 before setting its budget at \$26,007.

"You can see the inflationary trend of the past year if you look at our 1971 budget requests," Thornton said. Last year, the requests made by the various agencies totaled only \$27,459, he added.

A list of the agencies served by the Chelsea Community Chest, their budget allotment from the chest, and a brief description of their activities follows.

In 1970, the Salvation Army assisted 36 families in the Chelsea area. The Salvation Army answered direct needs of the families they served with checks, food, toys, groceries and clothing. This year, the Salvation Army will receive \$1,100 from the Chelsea Community Chest.

More than 165 Chelsea area girls and 39 adults are involved in scouting programs supported by the Huron Valley Girl Scouts. The scouting association trains leaders, plans character building and instructional activities, and community service events. Huron Valley Girl Scouts are due to receive \$2,120 from the Chest this year.

The Boy Scouts have 10 units involving 259 boys and 94 adults in the Chelsea area. The allocation made by the Chest to the (Continued on page three)



## Immanuel Church Calls New Pastor

The Rev. LeRoy Johnson, an Evangelical Alliance Mission missionary to Korea and Trinidad for the past 16 years, has been called recently to be pastor of Immanuel Bible church.

In Korea, he was involved in evangelism on the islands of the west coast, where he, with the help of national evangelists, saw 12 churches established.

While in Trinidad, he worked in a church planting ministry, and assisted in a Christian youth camp.

His wife, Audrey, held Bible classes for women and children. The Johnsons will live in the Immanuel Bible church parsonage. (Continued on page three)



THREE PLUS ONE: Patients at the Chelsea Community Hospital are treated to Thursday afternoon musicals every other week or so by a trio from Pinckney comprised of Mrs. Mildred Parks, bass, Mrs. Bernice Jordan, accordion, and Mrs. Ruth Kitchen, banjo. Joining the trio occasionally is Mrs. Verna Ashfal, violin. The volunteer performers play anything but classical and rock music for their audiences, and, just to keep things interesting, play instruments other than the one they're pictured with, now and then. The trio is now searching for a name.

## Fall Clothing Drive Slated Tuesday

The Church Women United's fall clothing drive for "The House by the Side of the Road" will be held from 9 to 11 a.m. Tuesday, Oct. 19 at the Congregational church in Chelsea.

The greatest need at this time is for fall and winter clothing for children—especially winter coats—Mrs. Jack Merkel, head of the local drive, said, adding that "The House" accepts only clean clothing in fairly good condition.

"The House by the Side of the Road" was established in July, 1970 through the efforts of Mrs. Raymond Crabtree and Mrs. Sigismund Binkowski, Ann Arbor church women who were convinced that the various clothing distribution programs in the county's churches could be more efficiently administered if they were brought together under one roof.

After the women found church approval for their idea, they persuaded the County Board of Commissioners to provide a rent-free location for the program. The commissioners unanimously approved the proposal giving "The House" a small, renovated house in the Washtenaw County Service Center.

"We were convinced that a wealth of household and clothing supplies were available," Mrs. Crabtree, now manager of "The House," said.

Her assumption proved to be correct. Since its inception, more than 125,000 articles of both new and used clothing, 10,000 household articles and small appliances, and 150 layettes for newborns each containing 65 to 85 items, have been distributed by "The House."

"The House" serves only those referred to them by schools, churches, public institutions, hospitals, service agencies, and concerned individuals. More than 2,500 referrals have been received from over 50 different agencies and sources, and 12,000 people as (Continued on page six)



CEA HONOREES: Thirty-nine Chelsea teachers and administrators with 10 or more years of service in the field of education were honored at a banquet given by the Chelsea Education Association Saturday night. Some of those receiving recognition during the evening are: (left to right) front row: Isabel Elsiele, Janet Fuika, Dorothy Thodeson, Margaret Senne and Creta Winkle. Second row: Warren Mayer, George Prinzing, Al Smith, Anne Morgan, Vivian Michelson, and Mary K. Weber. Third row: Charles Lane, Pat Wade, Sylvester Wojcik, Superintendent of Schools Charles Cameron, George Bergman, Jim Hoffmeyer, George Marshall, Robert Benedict, Don Young and Orville Tompkins.





## Washington Report by Congressman MARVIN L. ESCH

The House of Representatives gave quick approval to a compromise version of the two-year draft extension bill in the form of a conference report, after having passed its own bill six months ago. When the draft extension went to the Senate, it became bogged down over a controversial rider known as the "Manfield Amendment," which called upon the president to withdraw all U.S. forces from Indochina within a period of nine months subject to the release of prisoners of war.

Finally the House and Senate conferees agreed upon compromise language that urges the President to negotiate an immediate cease-fire in Vietnam and the withdrawal of all U.S. forces by the same date contingent upon the release of American POW's.

My position on the war is well known; I have long favored our total withdrawal at the earliest possible date. I am glad to see that the Mansfield Amendment was accepted, even if it was a watered-down version.

The latest draft extension rings important changes in the rules under which the Selective Service operates. For example, for graduate students there is a new policy on postponements of inductions. Graduate students who now receive induction orders are eligible to have their induction postponed only to the end of their current semester or term. An exception to this rule would occur if a student is in his last year of graduate work, whereupon he would be able to receive a postponement until the end of the academic year.

Another key part of the new

draft law permits a young man who has lost a member of his immediate family through hostile action in Vietnam to be released from active duty. Additionally a draftee who has a full-blooded relative listed as captured or missing in action can also request a release from active duty.

Getting back to military pay, most of the record increase was earmarked for first term military so that the person just entering the service is at last being offered attractive compensation. No longer will a new private, airman, or seaman be asked to serve his country and live at poverty standards.

The goal of a volunteer army has long been one for which I have fought. I am disappointed that it was necessary to extend the draft for two more years, but I believe we have taken a major step toward realizing the goal of a volunteer force.

## Frosh Grid Team Shuts Out Lincoln

Chelsea's freshman grid team played Lincoln in the rain last Wednesday afternoon, and defeated them, 26-0, the team's first shut-out and third victory of the season.

Lincoln fumbled the opening kick-off, and Chelsea's Dave Proctor recovered, setting up Chelsea's first touchdown, which followed on a 30-yard run by Karl Gauss.

Gauss scored again later in the first quarter on a 25-yard dash; Ron Collins made the extra point, and Chelsea led, 14-0.

Neither team could move in the second quarter, and Chelsea took its 14-0 lead into the locker room at the close of the half.

In the third quarter, defensive member Don Bollinger fell on a Lincoln fumble at Lincoln's 40-yard marker. Ron Collins topped a short drive with a five-yard run to make it Chelsea, 20, Lincoln, 0.

Lincoln tried to take to the air in the second half, but a strong pass rush led by Ron Keil, Don Bollinger, Tim Eder, and Dennis Barker, and coverage from Todd Ortrberg, Curt Winans, Tom Ball and Dave Keiser, killed the Rail-splitters' passing attack.

It was definitely Chelsea's ball game from the third quarter on. Chelsea scored their final touchdown on the last play of the game. Karl Gauss took a short pass from Perry Johnson, and outran three Lincoln defenders to go 55 yards for the score.

According to freshmen coach Bill Bainton, it was Chelsea's best team effort so far this season. All 24 players saw considerable action, and all played fine football, the coach said.

Chelsea will now face its two toughest opponents of the season in games tonight and next Wednesday. They travel to Vandercook Lake tonight, and to Tecumseh next Wednesday.

## Stanley Thayer Named Business Manager of Liquor Control Comm.

Lansing — State Commerce Director Richard E. Whitmer has named Stanley G. Thayer of Ann Arbor as Acting Business Manager of the Michigan Commerce Department's Liquor Control Commission.

Whitmer said Thayer will continue as chairman of the five-man bi-partisan Liquor Commission while serving as Acting Business Manager, succeeding George J. Burke, Jr., of Howell who died last Sunday.

Thayer, who has been chairman of the Commission since 1967, is a graduate of the University of Michigan Law School and served as Justice of Peace and Acting Municipal Judge in Ann Arbor and Ypsilanti in the late 1950's.

Elected to the Michigan Senate in 1960, he served as Majority Leader during his second term. He was a member of the Michigan Employment Security Commission for two years prior to his appointment to the Liquor Commission.



## MICHIGAN MIRROR

By Elmer E. White, Secretary, Michigan Press Association

**Benefits Low**  
The GI Bill, the vehicle through which countless veterans of World War II and Korea received a college education, isn't doing the job it's supposed to do any more.

The benefits which a veteran of the Vietnam War can receive under the program haven't changed. Unfortunately for the veterans, prices have changed.

A veteran returning from World War II could receive \$500 per year for tuition and fees, plus a living allowance of from \$75 to \$125 per month. No one got rich off those benefits, but they were enough to finance an education.

As a result, 50 percent of the men returning from both World War II and Korea attended some type of educational, vocational or technical institution.

But, only some 20 percent of Michigan veterans returning from

Vietnam go on to receive further education or training.

For nine months of education, a veteran receives \$1,575, barely more than his father received. The total is about \$900 short of what Michigan State University says is an "existence" level for students attending it.

By existence level, the university means the minimum amount of money needed to pay for tuition, books, room and board. It does not include clothing, insurance or expenses for things such as a car.

The veteran's problem is further compounded by a high unemployment rate which chokes off the possibility of his getting a good job.

The Michigan legislature may do something about this situation. The Senate already passed a proposal now waiting for House action that would provide for a public vote on a \$100 million fund

to help finance education for veterans of Vietnam. Originally, the proposal was worded as a constitutional amendment so that there could be a vote on it this fall if any other proposals were put on a state-wide ballot.

Now it will probably go on the November, 1972, ballot.

The measure would provide assistance of up to \$1,000 a year for veterans who want more education, enough to put them at the "existence" level.

One reason assistance has been so slow in coming has been the unpopularity of the Vietnam War itself.

This was a factor taken into account by Sen. Harry DeMaso, R-Battle Creek, when the proposal was being introduced in the Senate.

"This proposal doesn't have anything to do with whether you like or hate the war over there," he said. "This is simply something to make sure the young men who have gone over there, and risked their lives are given a decent chance for an education when they get back."

A lot of them didn't ask to go over there, but they got sent anyway," he said. "I think this is the least we can do for them."

**Michigan Seventh**  
Michigan may be the "Motor State," a title it might deserve. But it is far from the top in ranking of states by total motor vehicle registrations.

The Federal Highway Administration, which keeps a count on such matters, ranks the Motor State seventh in the nation in the total of motor vehicles registered. According to federal estimates, 4,681,000 vehicles will be registered in the state by the end of 1971. This puts her behind California (12.3 million), New York and Texas (both with 6.9 million), Ohio (6.2 million), Pennsylvania (6 million) and Illinois (5.4 million).

Michigan's total breaks down to 3,996,000 cars and 685,000 trucks and buses. Ironically, in motorcycle registrations—a field in which the vehicles are almost entirely foreign-made—the state ranks second, behind only California, with 187,200 registered.

Yours truly,  
Uncle Lew.

## Uncle Lew from Lima Says:

DEAR MISTER EDITOR:

I see by the papers where we sudden got more school teachers than we got teaching jobs in this country. Five year ago schools was crying for teachers, and now it looks like it's the other way around. But from what I can read, Mister Editor, the experts ain't shore whether it's a case of being overeducated or undereducated.

Actual, I don't understand all I know about population. You read where one scientist says the population is growing so fast we're running out of room and food, and on the next page you'll see where the birthrate has dropped off so sharp that schools, toy makers, diaper services, nursery schools and kindygartens is worried cause they've prepared for a heap more than they got. How many ways besides having babies can we increase the population?

This matter was brung up Saturday night at the country store, and Ed Doolittle got the floor right off and answered my question. He said the trick is to keep folks we got around longer. Ed said he sees big trouble ahead for this country on that account. As folks live longer, he said, they is going to be using their Social Security longer and they're going to upset the hole shaky system. The idea, Ed said, was fer folks to pay into Social Security all their working lives, and then die afore they could get much of what they paid in back. In this way, the system would keep growing.

The way it's going now, went on Ed, the rates will be so high till a feller jest starting out will pay about what he makes into Social Security to provide benefits for all them that's living longer than they was supposed to. By the time he gets ready to draw benefits, the hole system might be bankrupt, was Ed's words.

Practical speaking, Mister Editor, it's hard to plan fer people, and it looks like we're jest learning this. Clem Webster told the fellers Saturday night that he had saw one city's answer to busing younguns all over creation. Stead of hauling the younguns to school,

Clem said, they haul the schools to them. They got portable classrooms they can take where they need em.

So many conflicting opinions on overthing, through, it's a good thing the papers got words to deal with em. We got "over" and "under" fer achieving and killing, and we got "non" fer pore and work, and it makes all our problems sound better even if they ain't. Zeke Grubb's preacher come in the store the other night, and he reported his little boy was hollering about being "overwashed" cause his mamma made him take a bath ever night.

To put the stopper in the word jug, I see where some wimmen is calling fer changing "history" to "herstory." You don't reckon the papers would overlie about some-pun like that?

Yours truly,  
Uncle Lew.

## 4-H Calendar

Oct. 14-16: 4-H Teen Leadership school, Camp Kett.  
Oct. 19—Leaders "Round Table," 8 p.m., in Saline.  
Oct. 21-23: 4-H Teen Leadership school, Camp Kett.  
Oct. 29-30: 4-H Adult Leaders Horse Training Conference, Camp Kett.

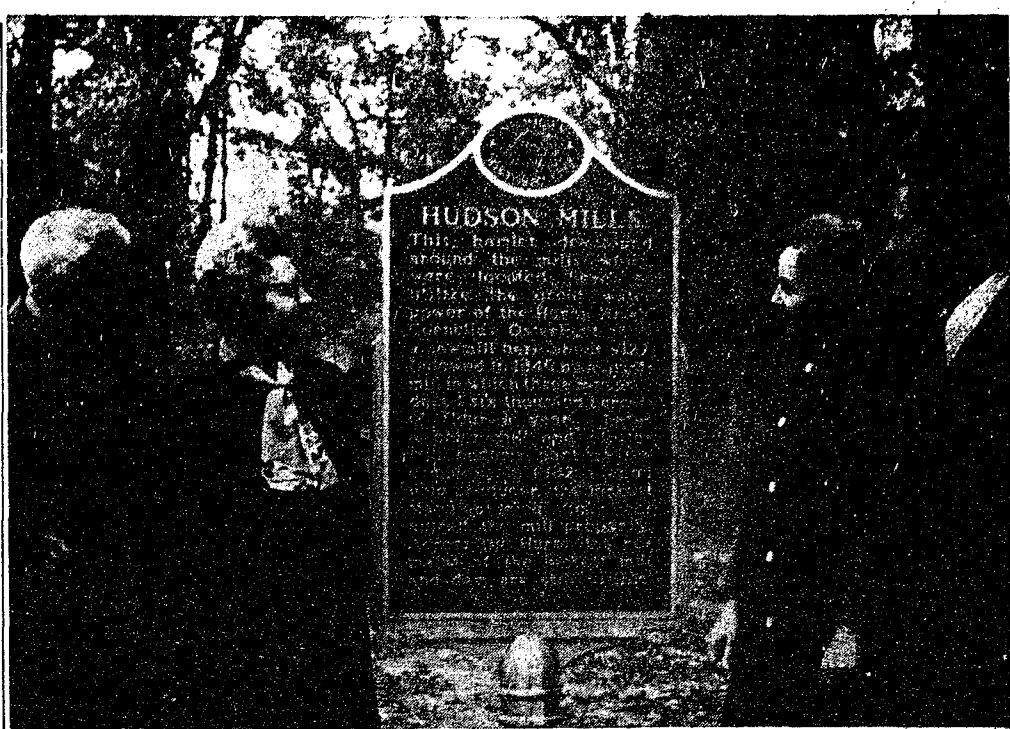
Six million Americans are treated for sinus trouble each year.

## IF YOUR ROOF IS HURTIN' Call Burton!

- ★ Old and New Roofs
- ★ Hot Tar and Metal Roofs
- ★ Aluminum Siding
- ★ Aluminum Awning and Storm Doors and Windows
- ★ Seamless Aluminum Eaves Troughs and Down Spouts
- ★ Mobile Home or Trailer Skirting

## COOPERATIVE ROOFING & SIDING CO.

Call 662-5900 or 662-3288  
Evenings Call Burton Rathburn, 663-0754



**PRESIDING AT THE UNVEILING** of this Hudson Mills Historical Marker in Hudson Mills Metropolitan Park near Dexter are these officials. Left to right are Park Supervisor Brenton Schultz and Mrs. Schultz, of 7581 Dexter-Pinckney Rd.; Mrs. Norma McAllister, secretary, and Frank Wilhelme, president, both of the Dexter Area Historical Society, who helped officially unveil this marker on

Thursday, Oct. 7. There was a dam, sawmill, grist mill and other mills at this site settled as early as 1827, wherein the Huron River was an important natural resource for the settlers coming to Washtenaw county. The marker is registered with the Michigan Historical Society. Mrs. McAllister lives at 8415 W. Huron River Dr., and Wilhelme lives at 541 S. Ashley St., Ann Arbor.

## Historical Marker Unveiled At Hudson Mills Metro Park

Members of the Dexter-Area Historical Society and officials of the Huron-Clinton Metropolitan Authority unveiled a historical marker at Hudson Mills Metropolitan Park, northwest of Dexter, on Thursday, Oct. 7, at 3 p.m.

The marker points out that this site was formerly the location of a small hamlet called Hudson Mills, which contained a grist mill, a cider mill and a plaster mill. Thus, the Huron River was an important natural

resource for the early settlers of Washtenaw county because it was a source of water power for driving mill machinery. As early as 1827, a dam and sawmill were constructed at Hudson Mills to provide lumber for pioneer buildings.

The Michigan Historical Society in January of this year registered Hudson Mills as local site Number 110, which is now a part of Hudson Mills Metropolitan Park. The purpose of the marker is to remind citizens of the grist and other mills that originally existed on the site.

Participating in the dedication ceremony were Frank Wilhelme, president; and Mrs. Norma Mc-

Allister, secretary, both representing the Dexter-Area Historical Society. Wilhelme resides at 541 S. Ashley St., Ann Arbor, and Mrs. McAllister lives at 8415 W. Huron River Dr., Dexter.

Huron-Clinton Metropolitan Authority park officials present included Brenton Schultz, supervisor of Hudson Mills Metropolitan Park and a Dexter resident; James J. Pompo, Deputy Director of the HCMA; Charles A. Damann, park superintendent of Hudson Mills and Kensington Metropolitan Park near Milford; and William F. Hopkins, chief naturalist for the Authority.

## 4-H Dog Care Club Holds First Meeting

The first meeting of the 4-H Dog Care and Obedience club took place at the Rural Activities Center last Tuesday, where the leaders and youths discussed the program of the club.

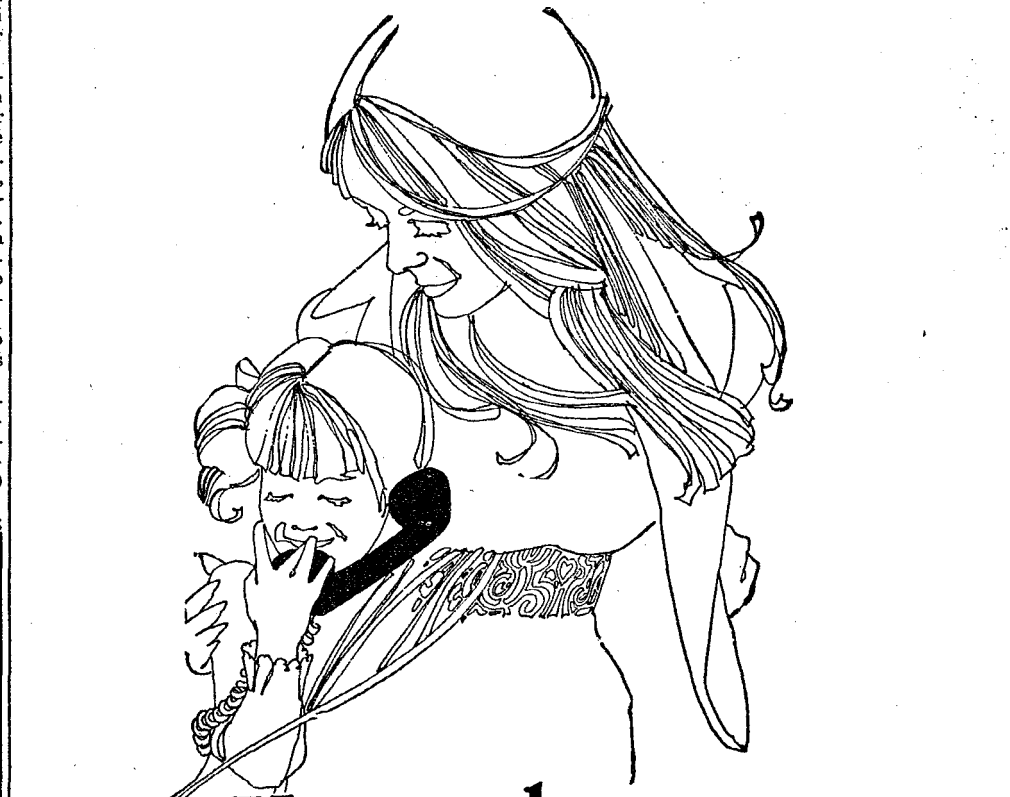
The next meeting will be Nov. 2 at 7:30 p.m. The tentative meeting place will be Wylie Middle school for all interested youths 5th grade through 12th grade in the Chelsea, Dexter area.

## SING-ALONG MUSIC at INVERNESS INN NORTH LAKE

Saturday Nights - 9:30 p.m. to 1:30 a.m.

Music By  
**JIM ROMINE and GARY SCRIPTER**

**YOUR FAVORITE SANDWICHES**  
**SHRIMP, CHICKEN & FISH DINNERS**  
**BEER - WINE - LIQUOR**



## You can lower the cost of loving by 40%.

Now get a 20 or 40% discount everywhere, everytime you call long distance within Michigan. Just dial direct.

There's a little love out there... for you. Love you experience all too infrequently.

Why not make a change, with an unexpected call? You'll make two people happy... someone you love, and you.

And now you can call anywhere in Michigan weekdays after five, and weekends from five p.m. Friday till five p.m. Sunday, and save 40%, just by dialing direct!

Or dial direct any other time and save 20%.

As always, there's no quicker or more personal way to say, "I love you" than by phone. So, if you want to make two people happy... don't hesitate to call!

Here's how to direct dial long distance and save

Mon. thru Fri.	Sat.	Sunday
7 AM TO 5 PM	20%	40%
5 PM TO 7 AM	40%	20%
		5 PM TO 11 PM
		40%

Discounts also apply to station-to-station calls in areas where direct dialing is not yet available.



## Howell Livestock Auction

The Wise Owl Says Ship to Howell!  
**SALE EVERY MONDAY, 2 p.m.**  
Phone 546-2470, Bim Franklin  
Mason 677-8941

## Market Report for Oct. 11

### CATTLE—

Good to Choice Steers, \$31 to \$33  
Good Choice Heifers, \$29 to \$31  
Feed Heifers, \$24 to \$27 to \$30  
Ut.-Stk., \$28 and down.

### COWS—

Heifer Cows, \$24 to \$26  
Ft.-Commercial, \$21 to \$23.50  
Canner-Cutter, \$18 to \$21  
Fat Beef Cows, \$19 to \$21.50

### BULLS—

Heavy Boloena, \$27 to \$29  
Light & Common, \$24 to \$27

### CALVES—

Prime, \$13 to \$17  
Good-Choice, \$10 to \$13  
Heavy Femora, \$8 to \$10.25  
Calf & Med., \$25 to \$35

### FEEDERS—

300-400 lb. Good to Choice Heifers, \$28 to \$32  
400-500 lb. Good to Choice Steers, \$22 to \$24  
500-600 lb. Heifer Steers, \$20 to \$22  
500-600 lb. Heifer Steers, \$20 to \$22  
Commercial-Med., \$25 and down.

### CHEEP—

Wooled Slaughter Lambs:  
Choice-Prime, \$26 to \$28  
Good-Hill, \$22 to \$26  
Cruelty Ewes, \$4 to \$10.25  
Feeder Lambs, all weights, \$21 to \$25

### HOGS—

200-300 lb. No. 1, \$20 to \$21  
200 lb. and up, \$19 to \$20  
200 lb. and up, \$17 to \$19  
Light Hogs, \$18 and down.

### SWINE—

Heavy Light, \$16.50 to \$17.25  
200-300 lb. \$16 to \$16.50  
500 lb. and up, \$15 to \$17

### Boars and Stags—

All weights, \$13 to \$16

### Feeder Pigs—

Per Head, \$8.50 to \$15

### HAY—

1st Cutting, 60c to 65c  
2nd Cutting, 50c to \$1.00

### STRAW—

Per Bale, 60c to 65c

### COWS—

Treated Dairy Cows, \$200 to \$400  
Treated Beef Type Cows, \$200 to \$300

Established 1871 **The Chelsea Standard** Telephone GR 5-3581

Excellence Award By Michigan Press Association  
1951-1952-1960-1964-1965-1966

Walter P. Leonard, Editor and Publisher

Published every Thursday morning at 800 North Main Street, Chelsea, Mich. 48118, and second class postage paid at Chelsea, Mich., under the Act of March 3, 1879.

ADDRESS CORRECTION REQUESTED

Subscription Rates (Payable in Advance)

In Michigan: One Year \$4.00, Six Months \$2.25, Single Copies \$1.15  
Outside Michigan: One Year \$6.00, Six Months \$3.50, Single Copies \$2.25

Service men or women, anywhere, 1 year \$4.00

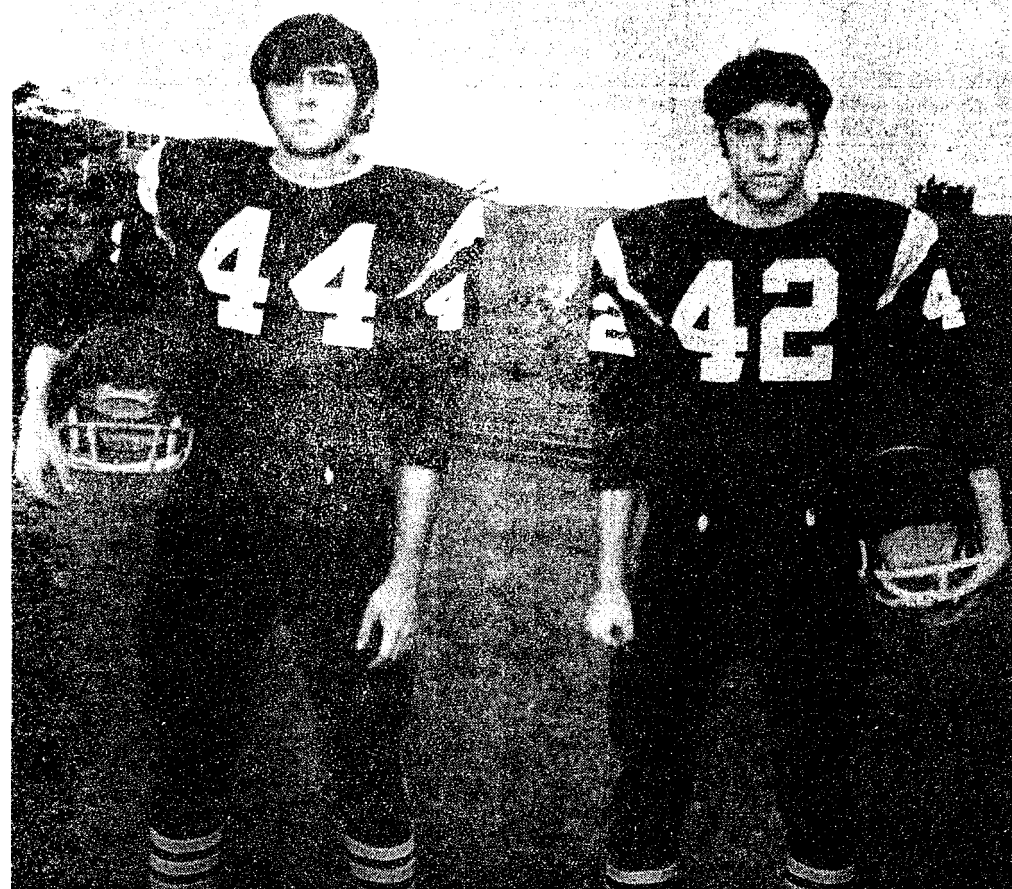
MEMBER **NATIONAL NEWSPAPER ASSOCIATION - Founded 1888**

National Advertising Representative **MICHIGAN NEWSPAPERS, INC.**  
267 Michigan Ave.  
East Lansing, Mich. 48822

State Licensed and Bonded



## Gridders of the Week



JEFF HUGHES (44), a senior halfback, was back in action last week, after missing the Dexter game because of a blood clot in his leg. Hughes first injured the leg in a pre-season scrimmage when he ran off the field into an occupied chair on the sidelines. He said that the leg was repeatedly hit in the injured spot, causing the clot. Although he's still getting medical attention, he said that the leg doesn't bother him anymore, and that he's able to go an entire game without difficulty. Hughes is playing his fifth year of football this year, his second year on the varsity. He's also been involved in track and basketball since his freshman year. An ardent football fan, he's proud of the fact that he hasn't missed a U. of M. home football game in five years. He plans to study inhalation therapy, as does his brother Mike, probably at a small college. In addition to his brother, Mike, Jeff also has one sister, Carol. He is the son of Mr. and Mrs. Ceber Hughes, 6651 Werkner Rd.

TOM LIXEY (42), a senior fullback, is playing his fourth year of football, his second year on the varsity, this year. He's also a varsity basketball player, and will play basketball for the third year this winter. Lixey has been plagued by leg cramps this season which caused him to leave the Saline game. He said this week that the cramps haven't bothered him during practices since the Saline game, and that he hopes they will not reappear during the all-important Lincoln game. Lixey is a Senior class Student Council representative, and also works for the Staffan Funeral Home on a part-time basis. He plans to attend college, possibly Central Michigan University, but has not yet decided on a field of concentration. He has one sister, Barbara, and two brothers, John and David. He is the son of Mr. and Mrs. Harvey Lixey, 719 S. Main St.

## Bulldogs Hold Off Lincoln for 31-24 Victory

(Continued from page one)

hind blocks by Tom Lixey, Tom McKernan, Jeff Daniels and Jeff Smith. Steve Knickerbocker kicked the extra point, and it was Chelsea 24 Lincoln 6.

A bad snap from Chelsea's center, which sailed over the head of the punter, led to Lincoln's second touchdown. The ball was downed on Chelsea's eight-yard line, and on the first play, Lincoln quarterback, Bob Davis swept the right end for the score.

Chelsea bounced right back, as the offense mounted a 48-yard drive which culminated in an eight-yard touchdown pass from quarterback Wayne Welton to split end Dave Lukasik. Knickerbocker kicked the extra point, and Chelsea had a commanding 31 to 12 lead.

Chelsea found itself in a tight spot, however, as Lincoln scored two touchdowns early in the fourth quarter. Lincoln got the first of the two when Ray Dufek ran 52 yards through the middle for the TD. The second score came when Lincoln defensive end Ralph Walton picked off a Chelsea pass and ran 60 yards for the touchdown. Chelsea found its lead had dwindled to a mere seven points.

Chelsea tried to run out the clock, but with only four minutes to go Lincoln took possession following a Chelsea fumble.

Lincoln was inside the Chelsea 10 with less than a minute to go, well aware that a touchdown and a two-point conversion would give them the game, but Chelsea's stalwart defense, led by Marty Cashdollar, Randy Brier, Ed Koenigter, and Bob Wojcicki nailed Lincoln for a five-yard loss, and the clock ran out before the Railsplitters could get another play off.

This Friday's game against Novi is expected to be another spirited game, as both teams will be trying to keep their undefeated records intact.

Novi defeated Dexter, 14 to 0 last Friday.

## JV Gridders Battle Lincoln For 18-6 Win

Chelsea's JV Bulldogs downed Lincoln, 18 to 6, last Thursday, giving them a four win, no loss record for the season.

On the first play of the game, Marvin Guster went 45 yards to Lincoln's 24-yard line. Chelsea moved in to score in seven more plays, with Mike Nadeau making the final one-yard dive.

The touchdown and a second quarter pass interception by John Tandy were Chelsea's only successes in the first half as Lincoln dominated the play. The Railsplitters gained 112 yards in the first half, and scored on a 34-yard run in the second quarter to make the half-time score, 6 to 6.

After the half, Chelsea seized control, rolling up 104 yards for the half, while holding Lincoln to a total 10-yard gain.

In the third quarter Rick Miller blocked a Lincoln punt and Daryl West recovered the ball on Lincoln's 12-yard line. Chelsea moved in for the score, as Marvin Guster went the final yard. It was Chelsea, 12, Lincoln, 6.

In the fourth quarter, Lincoln errors cut short their own drive, and added to Chelsea's push for their third touchdown.

Jack Hackworth recovered a fumble, giving Chelsea temporary possession of the ball. Howard Haselschwardt intercepted a Lincoln pass, and returned it to the Lincoln 15-yard marker on a 45-yard run. Two plays later, Marvin Guster went 10 yards for the third and final TD of the game.

Rick Miller stopped Lincoln's last change for a score when he recovered a Railsplitter's fumble with 30 seconds left in the game.

Chelsea was led defensively by Rick Miller with 11 tackles, Howard Haselschwardt with 10, Daryl West and Mike Nadeau with 7 each, Paul Brown with 6, Marvin Guster with 5, and John Houle, Keith Kargel and John Tandy with four each.

According to JV coach Jon Schaffner, Chelsea's pass defense looked much better, last week as Lincoln threw 10 passes without a completion, losing two to interceptions, while another two were nearly intercepted by the Chelsea defense.

Chelsea was handicapped by two key injuries. Jeff Marshall twisted his ankle on the opening kickoff, and Mike Murphy pulled shoulder and neck muscles in the second quarter. Both were lost for the remainder of the game, but both are expected to be back in action for the Novi game.

Chelsea meets undefeated Novi, it what should be one of their toughest games of the season, to night at 7 p.m. under the lights on the Chelsea athletic field.

## Immanuel Pastor

(Continued from page one)

They have three sons: John, who is married, and a junior at Spring Arbor College; Stephen, a freshman at the U. of M., and Nate, who was born in Korea, a student at Beach Middle school.

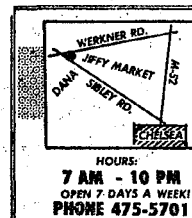
## MARATHON GAS PUMPS LOCATED AT JIFFY MARKET

Gas as well as Groceries - Meats - Beer - Wine - Bread - Pop - Ice Cream - Household Items Milk - All at Everyday Low Supermarket Prices!



**PRESTONE ANTI-FREEZE** \$1.79 Gallon  
**MARATHON TOP QUALITY MOTOR OIL** 10, 20 or 30 Weights 39¢ qt.

**REGULAR GAS** 33.9¢ gal. Includes All Taxes  
**PREMIUM GAS** 37.9¢ gal. Includes All Taxes



**Jiffy market**  
 BIG ENOUGH TO SERVE YOU.....SMALL ENOUGH TO KNOW YOU!

COMPLETE SUPER MARKET

Corner of SIBLEY &amp; WERKNER RDS....CHELSEA, MICHIGAN

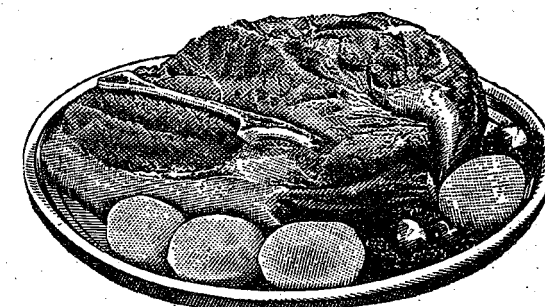
SALE PRICES EFFECTIVE THURSDAY, OCT. 14, THRU SUNDAY, OCT. 17, 1971.

Store Hours Are 7 a.m. to 10 p.m. 7 Days A Week

## BEEF CHUCK ROAST

U.S.D.A. GRADE CHOICE

**BLADE CUT** . . . . . 59¢ lb.  
**CENTER CUT** . . . . . 69¢ lb.  
**ROUND CUT** . . . . . 89¢ lb.  
**ENGLISH CUT** . . . . . 89¢ lb.



Tender Beef with Flavor!

**PORK NECK BONES** . lb. 15¢  
**SAUERKRAUT** . . . . . 10¢

A Price Freeze Special!

**HAM** 5-Lb. Can \$3.99  
 Sliced at no charge.

## BREAKFAST SPECIAL

HOME - MADE

**PORK SAUSAGE**  
 59¢ lb.

U. S. GRADE A WHITE

SHAMROCK

**EGGS**  
 Large Size 45¢ doz.

SLAB

**BACON**  
 45¢ lb.

JIFFY MARKET

## FRESH BAKERY

Pies - Cakes - Rolls - Cookies

Bread - Cup Cakes - Donuts - Others

Old German Pretzels Wed. &amp; Sat. Afternoons.

In Appreciation for Your Support of Our Fresh Bakery...

## BORDEN'S JUMBO GALLON

**VANILLA ICE CREAM** Gal. 99¢  
 Crtn.

Weight Watchers Beware!

FRESH MERCHANDISE ARRIVES 1 P.M. EACH AFTERNOON.

## MICHIGAN SUGAR... 49¢

5-Lb. Bag

## BANQUET POT PIES

Your Choice: Beef - Chicken - Turkey - Tuna

8-Oz. Frozen Pie 15¢

## VELVEETA CHEESE

Plain or Pimento

2-Lb. Box 99¢

## HOLSUM BREADS

Wheat - Rye - Cracked Wheat

3 1-Lb. Loaves \$1

## MAXWELL HOUSE COFFEE 79¢

1-Lb. Can

RISDON'S FRESH HOMOGENIZED

**MILK.** Gal. Crtn. 89¢

**BREAD** 1 1/4-Lb. Loaf 19¢  
 Still at Bargain Prices!

GAS PUMPS &amp; STORE OPEN 7 a.m. to 10 p.m. 7 Days a Week

## Chest Funds Allocations...

(Continued from page one)

Boy Scouts, \$3,250, will be used to support scout activities such as camporees and jamborees, troop leader training, and scout awards.

The Chelsea Social service is a unique agency. Chelsea Social Service operates only in Chelsea, and offers immediate emergency aid to those in need. Last year, Chelsea Social service aided 80 families, primarily with food and clothing. Chelsea Social Service will receive \$2,500 from the Chest this year.

The Washtenaw Association for Retarded Children initiates programs which will aid and train retarded and severely handicapped children. Last year, the association provided bus service for two Chelsea children to daily programs offered in Ann Arbor. \$350 will go to the Association from the Chelsea Chest this year.

Huron Valley Child Guidance provided continuing assistance to between 14 and 18 Chelsea children with emotional difficulties in some 400 interviews last year. Huron Valley Child Guidance works with parents and children, plans pre-care and after-care in conjunction with area hospitals, and also works with the juvenile court. The allocation from the Chelsea community chest to Huron Valley

Child guidance is \$300.

The American Red Cross collected 131 pints of blood in the Chelsea area, and disbursed 125 pints to Chelsea residents and workers during the last year. The Red Cross had 52 contacts with military families in the Chelsea area, provided transportation to many people and made special blood deliveries. The Red Cross also maintains the life saving and first aid courses taught in Ann Arbor which are open to Chelsea residents. This year, the Red Cross will receive \$4,000 from the Community Chest.

The Chelsea Recreation Program will receive \$6,000 from the Chelsea Community Chest this year, the largest allocation to any of the 12 agencies it assists. Chelsea recreation supports the concept of providing recreation for all ages by giving rent money for the Senior Citizen's Korner House, supporting a summer recreation program featuring arts and crafts activities, baseball leagues and swimming and winter knitting classes and basketball.

The Chelsea Bands will receive \$400 from the Community Chest this year. The money is used primarily to buy instruments for and to provide band camp scholarships to needy children. Catholic Social Services aided

128 Chelsea area families of all faiths last year through the office it maintains at the Chelsea Medical Center. In the county, Catholic Social Services aided 2,583 clients of which 804 were Catholic, 875 Protestant, 528 mixed, and 376 other or unknown. Catholic Social Service will receive \$1,000 from the Chelsea Community Chest this year.

The Michigan United Fund will receive \$4,487 from Chelsea this year. Michigan United Fund uses its funds in the following ways: 18 percent of the MUF budget goes to various health agencies to support their research programs; field and community services claim 20.88 percent of the MUF budget; 22.71 percent is devoted to public and professional education and instruction concerning the various problems of disease; 6.61 percent is used for planning and co-ordination, and 31.80 percent cent is allotted to individual services such as diagnosis, rehabilitation, therapy, counseling, and many others.

All the money received by the Chelsea Community Chest is disbursed to the agencies it supports. If contributors send the fund over its goal, the budget committee meets to determine additional allocations, Thornton said.

## A THANK YOU

to the following:

Cub Scout Troop 445 Klink Excavating Chelsea Auxiliary Police  
 Girl Scout Troop 58 3-D Sales Chelsea Lanes  
 Meabon's Chelsea Milling Spaulding Chevrolet  
 Hamburg Dairy

Jim Gaken, Hank Ortbring, Tim Ortbring, Joe Doering,  
 Merle Leach, Tim Ruhlig, Terry Lawrence & Mark Schulze

AND TO THE PEOPLE OF CHELSEA  
 For their continuing support of our Chicken Barbecue

## CHELSEA JAYCEES



Ads  
Taken  
Till 5 p.m.  
Tuesday

IT'S EASY TO  
BUY-SELL-RENT-  
HIRE & FIND WITH

**WANTED ADS**

Just  
Call  
GR 5-3581

**WANT ADS**

**The  
Chelsea Standard**

**WANT AD RATES**

PAID IN ADVANCE—All regular advertisements, 50 cents for 25 words or less, each insertion. Count each line as a word. For more than 25 words add 2 cents per word for each insertion. "Blind" ads or box numbers add 35c extra per insertion. **CHARGE RATES**—Same as cash in advance, with 15 cents bookkeeping charge if not paid before 5 p.m. Tuesday preceding publication. Pay in advance, send cash or stamps and save 5 cents. **DISPLAY WANT ADS**—Rate, \$1.10 per column inch, single column width only. 8-point and 14-point type only. No borders or boldface type. Minimum 1 inch. **CARDS OF THANKS or MEMORIALS**—Single paragraph style, \$1.00 per insertion for 50 words or less; 2 cents per word beyond 50 words. **COPY DEADLINE**—6 p.m. Tuesday week of publication.

**OLL TOP DESK**—Ash meat block. Ph. 428-8200. x19  
**PLEASE GIVE ENOUGH to count.** -18

**This Week's Special**  
**1971 PINTO**  
Many Extras  
Only  
**\$1995**

**USED CARS**

71 Lincoln 4-dr., air  
70 Galaxie 2-dr. hardtop  
70 Thunderbird, with air  
69 Galaxie 500 2-dr. hardtop  
87 Mercury 2-dr. hardtop  
66 Thunderbird, air.  
66 Buick LeSabre  
66 Galaxie 500 XL with air  
65 Fairlane 4-dr.

**TRUCKS**

69 Ford 1/2 ton  
69 Ford 1/2 ton  
67 International 1/2 ton pick-up. \$795  
65 Ford 1/2 ton  
68 Dodge 1/2 ton  
68 Chevrolet 1/2 ton

See Us About  
Demonstrators  
and Driver  
Education Cars

**PALMER FORD**

Open Mon., Wed., Thurs., Till 9:00  
Chelsea GR 5-3271  
x15tf  
**PLEASE GIVE ENOUGH to count.** -18

**WINTERIZE  
NOW!**

—STOVE PIPE  
—WEATHER STRIP  
—PIPE WRAP  
—WINDOW GLASS  
—FURNACE FILTERS  
—CAULKING

**Chelsea Hardware**

Your PRO Hardware

**PLEASE GIVE ENOUGH to count.** -18

**WANT ADS**

**BOARDING, trimming, training.**  
Town and Country Kennels,  
Jackson Rd. at Baker. NO 8-7200. 7tf

**Gem Travel Trailers**

**and Campers**

**PICK UP COVERS**

4" \$100.00  
26" \$179.00 and up

**Triangle Sales**

Chelsea 475-4202 40tf

**CLOGGED  
SEWER**

**Reynolds Sewer  
Service**

We Clean Sewers Without Digging  
Drains Cleaned Electrically  
**FREE ESTIMATES**  
**2-YEAR GUARANTEE**  
Phone Ann Arbor NO 2-5277  
"Sewer Cleaning Is Our Business—  
Not a Sideshow" 38tf  
**PLEASE GIVE ENOUGH to count.** -18

**THORNTON**  
475-8629

F—Frontage on Cavanaugh Lake,  
large stately trees, 2 bedrooms,  
electric heat, vinyl siding, a  
lovely spot for retirement.  
Terms possible.

O—Only 2 miles from village, farm  
home with 6 acres, barn, 2-car  
garage, and a nicely maintained  
3-bedroom house. Terms possible.

R—Rent the year-around cottage  
and enjoy this lakefront brick  
ranch home with all of the many  
extras. Terms possible.

3 and 10 Acre Parcels Available.  
Terms.

S—See this home and you will agree  
its 3 bedrooms, recreation room,  
2 baths, living room overlooking  
a large back yard, are features  
to be enjoyed by a young family;  
close to elementary schools.  
Terms possible.

A—All brick, family room, fireplace,  
3 bedrooms and attached  
2-car garage. A great view,  
yet still in the village.

L—Large lot, 3 bedrooms, nice living  
room, tiled bath, attached  
2-car garage. A great location.

E—Everything for the executive  
who wants a luxurious home,  
close to schools; 5 bedrooms, a  
magnificent family room and a  
kitchen every woman dreams  
about. Enjoy privacy while still  
within the village.

**MULTIPLE LISTING**

**John C. Pierson**

**ASSOCIATE**

or  
**Robert H. Thornton Jr.**

**REALTOR**

105 N. Main, Chelsea  
475-8629 eve. 475-2064, 475-8857 17

**FOR SALE**—Simplicity snow-blower,  
like new; dining room suite,  
table, 6 chairs, buffet, and china  
cabinet. Phone 475-2709. x17

**Boy's and Girl's  
JACKET**

**SNOW SUITS**

Use Our Lay-Away Plan

**DANCER'S**

**WANT ADS**

**ROBERT PATRICK** for home improvement, building and maintenance. Ph. 475-7480. 45tf  
**PLEASE GIVE ENOUGH to count.** -18

**HAMMOND ORGAN** teachers wanted to teach in their own homes. Call Grinnell Brothers, Ann Arbor. 682-6697. 24tf

**CALL FRANK** for all your carpet cleaning jobs, morning or weekend. Needs only 3 hours to dry. Only 10c per square foot. Phone now for free estimate, 761-4328. All work guaranteed. 38tf

**PIANO TUNING**, Chelsea and area. Facilities for reconditioning and rebuilding. Used piano sales; reconditioned grands and verticals. E. Elund. 426-4429. x50tf

**Contractor Servicing  
Chelsea, Dexter and  
Manchester Areas**

Complete Home Remodeling  
Inside and Outside

Specializing in extra living space, recreation rooms, kitchens and paneling. Installing all aluminum products, 5" eavestroughs, custom-made awnings, windows and doors, aluminum siding in many selected colors and styles.

Please Call

**DALE COOK**

Chelsea 475-8868 20tf

**CHELSEA  
School District**

**Five Beautiful  
Country Sites**

in  
Noah Heights  
Adjacent to Half  
Moon Lake State Park

Model Open 2-6  
Sat. and Sun.

Any time by appointment

—Carpeting throughout

—2-car garage

—Full basement

—Hotpoint stove and refrigerator

—All aluminum exterior

—Concrete porches, sidewalk, gravel drive

—Storms and screens

COME OUT AND TALK TO US  
ABOUT OUR WIDE VARIETY  
OF HOME PLANS.

We know you will be pleased.

**W. C. Weber**

**Construction Co., Inc.**

12290 Jackson Rd., Chelsea, Mich.  
475-2828 688-1935 475-4977

**CHELSEA'S PREMIER BUILDER**

**PLEASE GIVE ENOUGH to count.** -18

**REAL ESTATE**

6 ACRES, Sylvan township building lot. Price: \$8,000. Land contract available.

**SYLVAN TOWNSHIP**—Well located 64 acres excellent, level land.

**R. D. Miller**

**REAL ESTATE**

Real Estate Broker  
475-7811

15775 Cavanaugh Lake Rd.  
Chelsea, Mich. 14tf

**CABBAGE**—Now ready for sauerkraut. Phone 475-7295. 17

**ELECTROLUX  
VACUUM  
CLEANERS**

SALES and SERVICE

**JAMES COX**

Ph. 428-2931 or 428-8221  
Manchester



"We didn't get an incinerator in the Standard Want Ads to burn my recipes!"

**WANT ADS**

**WORK SHOE  
HEADQUARTERS**

Famous Red Wing Brand  
\$12.95 to \$26.95

**Foster's Men's Wear**

34tf

**ANNUAL WOMAN'S CLUB** of Chelsea rummage sale. Oct. 15, 9 a.m. to 5 p.m. Oct. 16, 9 a.m. to 12 p.m. Sylvan Town Hall. 17

**PLEASE GIVE ENOUGH to count.** -18

**NO HUNTING  
SIGNS**

Now available  
at

**Chelsea Standard**

300 N. Main St.

**LARGE GARAGE and YARD  
SALE**—Large selection of antique furniture, including complete dining room set (table, six chairs, china cabinet and buffet). Some antique dishes, pots and pans, cast iron kettles, and lots of miscellaneous items. Thursday, Friday and Saturday, Oct. 14-16, 9 a.m. to 5 p.m. 13759 Old US-12 East. 17

**GARAGE SALE**—Toys, kitchen utensils, misc. items, some furniture. 9 a.m. to 6 p.m., Saturday, Oct. 16, 409 Garfield St. 17

**FOR SALE**—1963 Mercury Meteor, 4 new tires, \$150. Phone 475-8426 after 5 p.m. 18

**Boy's and Men's  
RED HUNTING  
SUITS**

1-Piece, Insulated.

Start at \$19.99

**DANCER'S**

**HUNTERS**

SEE US  
FOR A GOOD GUN

—WINCHESTER

—REMINGTON

—ITHACA

—WE TRADE

—AMMO

—HOT SEATS

—DUCK, SQUIRREL, TURKEY CALLS

—INSULATED BOOTS

—HIP BOOTS

—WADERS

Chelsea Hardware

Your PRO Hardware 17

**WANT ADS**

**MEL HARTMAN**, residential builder. Free estimates: houses, garages, kitchens. Flat work and roofs. Call 878-6514. 13tf

**WORK SHOE  
HEADQUARTERS**

Famous Red Wing Brand  
\$12.95 to \$26.95

**Foster's Men's Wear**

34tf

A fine selection of

New and Used Cars

for immediate delivery

**Harper Pontiac**

Sales & Service

475-5311

Evenings, 761-2999 1tf

**KNAPP SHOES**

For Cushion Comfort

**Robert Robbins**

475-7282 48tf

**FOR SALE**—Push lawn mower, man's tan shoes, sport coat, sewing cabinet, man's bath robe, 4 ladies wool sweaters, odds and ends. Phone 475-8511. 18

**GARAGE SALE**—Friday, Oct. 15, 514 Arthur St., 10 a.m. to 3 p.m. 17

**FOUR ACRES**

In the country with 480-ft. frontage. Three-bedroom house on the south portion, and an attractive building site on the north. Excellent for the part-time builder or nature lover. 3005 Fishville Rd., Grass Lake, 10 minutes west of Chelsea. \$16,000.

**Willis Real Estate**

Grass Lake (517) 622-8481. 17

**SATURDAY WORK**

We need someone to wait on customers. Year around work. Every Saturday, 7:30 a.m. to 3:30 p.m. 17

**Chelsea Lumber Co.**

Phone 475-3391 19

**WANT ADS**

**RADIO AND TV REPAIR.** Bill Smith and Bob Lindsay. Ph. 475-4374. x11tf

**WANTED**—Roll-top desk and round table. Ph. 428-8200. x19

**HANNAH'S** husband Hector hates hard work so he cleans the rugs with Blue Lustre. Rent electric shampooer \$1. Dancer's. 17

**JUST RECEIVED**—Four rolls Lee's rubber backed commercial carpet. Ideal for kitchens and family rooms. Four colors. Regular \$6.95, Sale \$4.95. Merkel Brothers. x18

**FOR SALE**—1960 28-ft. Covered Wagon self-contained travel trailer, less than 1,000 miles. Reese hitch, electric brakes, wiring harness and mirrors. Needs some work, \$1,200. Call 475-7836. x17

**Stoney Ridge  
Tack Shop**

English equipment and apparel.  
**OCTOBER SALE, 20-50% OFF.** Summer coats, breeches, sheets, spurs, halters, leads, many more.

9970 Liberty Road  
Chelsea, Michigan x17

**SPIKE'S  
FLEA MARKET**

ANTIQUES and COLLECTIBLES

Every Saturday  
and Sunday

11 a.m. to 7 p.m.

Auctions  
Every Saturday

at 7 p.m.

Dealers and public invited.

4065 Page Ave.  
Michigan Center, Michigan  
(Page Ave. Exit, east 7/10 mile)  
Phone (517) 764-0250 x13tf

**1971 Clearance Sale**

All of these cars qualify for Excess Tax Return if removed by Federal Government.

1971 Electra 225 4-dr. hardtop (air cond.). Sticker price, \$5781.80. Sale Price, \$4735.00 (Demo).

1971 Oldsmobile Supreme 2-dr. hardtop (air cond.). Sticker price, \$4561.71. Sale, \$3900 (Demo).

1971 Opel station wagon, auto. trans. Sticker, \$2672.68. Sale, \$2400.

**USED CARS**

1971 Skylark 2-dr. hardtop (real nice) \$3195

1969 Opel Spt. 2-dr. DLX, 10,000 actual miles \$1295

1968 Tornado (air cond.) \$2195

1968 Volkswagen Ghia \$1295

1966 Olds 88 4-dr. sedan \$895

1966 Pontiac 4-dr. sedan (real nice) \$895

1965 Buick Special 4-dr. (one owner) \$595

1965 Pontiac Grand Prix, vinyl top \$595

1965 Rambler 4-dr. sedan (air cond.) \$495

1965 Dodge 4-dr. sedan \$195

**SPRAGUE**

**Buick-Olds-Opel, Inc.**

1500 S. Main St., Chelsea  
Phone 475-8664 17tf

**APPLES**—McIntosh, Jonathan, Greening, Spys. Bring own container. \$2.50 bushel. Norwin Lesser, Island Lake Rd., Dexter. x18

**SUFFOLK RAM** for sale. Four years old. \$30. 9100 Trinkle Rd. Phone 428-8254 after 5 p.m. x17

**GE REFRIGERATOR-FREEZER** combination. In excellent condition. \$100 or best offer. Also four antique chairs, \$35 each, or all for \$130. Phone 475-5891 after 4 p.m. x17

**WANTED**—Painting, interior and exterior, and general cleaning. Reasonable rates. Call 475-8594. x20

**PASTOR** interested in a home in the Chelsea area, three-bedroom, insulated and attached or nearby garage preferred. Reply to Box O-7A, in care of The Chelsea Standard. x18

**LUGGAGE**

The Selection

Is Good

at

**DANCER'S**

17

**ALLSTATE**

**INSURANCE**

AUTO - BOAT - COMMERCIAL  
LIFE - HEALTH - HOME

Phone Even. or Week-ends for

**N. H. MILES, Agent**

GR 5-8334 44

**WANT ADS**

**XEROX COPIES** made. Merkel Brothers. 41tf

**PATCHING and PLASTERING.** Call 475-7489. 38tf

**FOR REAL DOLLAR SAVINGS** be sure and see us before you buy any new or used car. Palmer Motor Sales Inc. Your Ford Dealer for over 50 years. 24tf

**FOR SALE**—GE electric dryer in good condition. Norge washer, needs repair. Both for \$30. Call 428-8893. x31



## WANT ADS

US for transit mixed concrete. Klumpp Bros. Gravel Co. Chelsea 475-2530, 4920 Lovell Rd., Grass Lake, Mich. x401

VEL TRAILERS — 13-ft. and 10x55 ft. trailers. John R. Trailer Sales, Gregory, Mich. 498-2655. x43f

RENTAL by the day, week, or month. Full insurance coverage, low rates. Call Lyle at Palmer Motor Sales, 3271. 25tf

TRUCK LEASING. For calls see Lyle Christwell at Palmer Motor Sales, GR 5-3271. 48tf

## Chelsea Rod & Gun Club TRAP SHOOT

7193 Lingane Rd.

## Open Every Sunday

10 a.m. to 2 p.m.

Until hunting season opens.

Various prizes up to \$10 value for top scorers.

PLEASE GIVE ENOUGH to count. x17

HOUSE FOR SALE

10-year-old remodeled home at 315

field, Chelsea, 3 bedrooms,

upstairs. New kitchen with

ins. Formal dining room; fire-

place in living room-den; new car-

peting, drapes downstairs; 1 1/2

baths. By owner. Call 475-7305.

x20

SALE—German Shepherds, 2

months old, 2 females,

months old. Ph. 475-7305. x17

SALE—Year-around home at

pleasant lake, 12 miles north of

Jackson, 5 rooms and bath, large

garage and storage room.

Large lot with lots of trees and

shrubs. Ken Byerly, 107 Water St.,

Bridge. Phone 851-7552. 15tf

RENT—5-room downstairs,

furnished apartment. No pets,

children. Reply Box OC-4, care

of the Chelsea Standard. x17

SALE—6-wk.-old pups. Moth-

er Labrador Retriever, \$5. Ph.

596-2580, 9262 Harr Rd.,

Waterloo. 17

WINTINGTON & FRANKLIN are

ready to relocate. 2 male tortoise

kittens well used to dogs and

even. Proven mousers. Tommy

McKin. Phone 475-7261. x17

AL FAMILY PET — 2 puppies

looking for homes. Labrador Re-

triever type, 7 weeks old, wormed

and trained. Katie McKin. Phone

7261. 17

SALE—'63 Chevy pick-up, 6

cylinder. Phone 475-7631. 17

SALE—Women's dresses, 4

size 15-16, 2 size 14. Call 475-

7631. 17

## WANT ADS

FOR SALE — Decca electric gui-  
tar, used one month. Also, size  
9E football shoes, only used  
once. Phone 683-8228. x48tf

## FORMAL WEAR

### RENTAL SERVICE

From - Weddings - Special Events  
& different colors.

## Foster's Men's Wear

PLEASE GIVE ENOUGH to count. x18

ASBESTOSLINE Semi - plastic

waterproofing for roofs, water

tanks, foundations, etc. 5 gallon

buckets. Price reduced 50%. Phone

NO 2-0517. x18

SQUASH FOR SALE—Butternut,

buttercup, green Hubbard, golden

Hubbard, hump. Corner of I-94 and

M-62 on McKernan Rd. Steve Toth.

Phone 475-7989. x17

## FARMS WANTED

We have a specific prospect for a

farm of 80 acres or more with a

large old home that can be re-

modeled.

We also have prospects for acre-

age, with or without buildings.

No limit to size.

We will be glad to call and discuss

your property with you.

Over 200 salesmen working for you

through our multiple listing ser-

vice.

## Spear & Associates

### REALTORS

1935 Pauline Plaza

Ann Arbor, Mich.

Bus. 769-8750

Res. 769-9380

x17tf

## WANTED

### TYPIST

Accurate, 55-60 wpm.

Apply in Person

## Chelsea Standard

300 N. Main St. Ph. GR 5-3581

PRIVATE REST HOME—Private,

carpeted room available, 14 years

experience. Manchester phone 428-

8595. x18

JANITOR WANTED approx. 4 hrs.

per night, 7 days a week. Write

Box OC6, care of Chelsea Standard.

16tf

FOR SALE—McIntosh apples, 4

5 miles south of Manchester on M-

52, corner of Bovens Rd. 17

FOR RENT—Apartment, 2-bed-

rooms, completely furnished,

modern. Private entrance. Adults

only. May be seen at 582 McKin-

ley, Chelsea. 18

## WANT ADS

UITAR INSTRUCTION. Classi-  
cal, folk, pop. Emphasis on the  
ory. Only \$3.50 for 1/2 hour. Phone  
475-1128. x12tf

LAND CONTRACTS PURCHASED

ED. Call R. A. McLaughlin, 475-

8883 or (617) 366-7765. x12tf

FRENCHING—Water, electrical

lines, footings, etc. 4 to 14 inch-

es wide, 0 to 6 feet deep. Call

Charles Slotum, 475-7811 evenings.

x2tf

EXPERIENCED CHILD CARE in

my home, any time. Phone 781-

8701 after 6 p.m. x5tf

## Real Estate For Sale

NEW LISTING—Large 3-bedroom

country home. Formal dining

room plus dinette, den with fire-

place, 3 baths, 2 1/2-car garage,

central air conditioning. Located

on 1 1/2 acres. Close to town.

\$60,000. x17

BRAND NEW—3-bedroom brick,

picture window overlooks golf

course, 2 ceramic baths, 2 fire-

places, large (unfinished) rec room.

2-car attached garage. \$48,500. Fi-

nancing available.

7 1/2 ACRES—All inside village

limits. Has 3-bedroom house,

garage, 745 feet of railroad front-

age. \$30,000. Terms.

## CLARENCE WOOD

### BROKER

Efficient PERSONAL Service

648 Flinders St.

Phone 475-2038 or 475-8217

x18tf

APPLES—Pick your own. Apple

Hill Orchard. Fresh cider and

donuts. Open daily 9 a.m. to 6

p.m. 4280 Willis Rd., 1/2 mile east

of Ypsilanti Hospital off US-24.

Phone 434-2828. x18tf

FOR SALE—TV console with radio

and stereo, \$75. Ph. 475-7436. 17

WILL DO BABY-SITTING in my

home. Ph. 475-8508. x17

FOR RENT—Upstairs 4-room ap-

artment with garage, centrally

located. For further information

call 475-2307. 18tf

WATKINS QUALITY PRODUCTS.

Famous for vanilla and spices.

Peter Miller, phone 428-4126 after

4:30 p.m. x22

Men's

## FLANNEL

### SHIRTS

Big Selection

at

## DANCER'S

17

AUCTION—Sunday, Oct. 17, 2 p.m.,

new and used merchandise, gam-

es, toys, household items, gift sets

for moms and dads. Everything

must go as we're closing shop.

Waldon Auction Barn, 15600 Her-

man Rd., Manchester, Mich. Phone

428-7216. 17

## WANT ADS

REPAIR SERVICE for household

refrigerators, freezers and gar-

bage disposers. Call Bill, 426-8314.

x12tf

FOR RENT—Fair Services Center

for meetings, parties, wedding

receptions, etc. Weekdays or week-

ends. Contact John Wellnitz, phone

475-4481. x27

## REAL ESTATE

COUNTRY HOME, 2 1/2 acres,

nestled in acres of state recrea-

tion land. Quad-level, 5 bedrooms,

2-car garage, fireplace, family

room, recreation room, nice barn

for horses; 600-ft. road frontage.

Call us to show this lovely home.

SF9142.

1964 NEW MOON home, 3 bed-

rooms, new oil furnace, electric

water heater on 1/4 acre of land.

MHS9015.

24 x 43 ft. new double wide Trav-

elogs 3-bedroom at Uniadilla Mo-

bile Estates.

## Howell Town & Country, Inc.

Local Representative

CARLIE WIEDMAN

Phone 878-3177

17

WILL DO BABY-SITTING in my

own country home on Cavanaugh

Lake Rd. by elderly lady. Any

age. Phone 475-8033 anytime. 23

RUMMAGE SALE—North Lake

United Methodist church, Friday

and Saturday, Oct. 15 and 16, 10

a.m. to 4 p.m. x17

## CHIEF

### ENGINEER

Midwest Area

Opportunity with major manufac-

turer for engineer with at least

5 years experience in spring en-

gineering, sales engineering and

customer service. Excellent bene-

fits, salary open. Send full infor-

mation to

James F. Haynes

Guy Arthur

and Associates, Inc.

P. O. Box 904

Toccoa, Georgia 30577

17

## WANT ADS

DO YOU NEED masonry work

done? Phone Ken Young, 426-

3342. Basement laid for 60¢ per

block. Free estimates on brick

work and fireplaces. x27

BABYSITTING in my home, day

or night, 208 South St. Phone

475-7822. 17

## MARY WOLTER

### Real Estate

7421 Dexter-Pinckney Rd.

near North Territorial

Phone 24-hour service

426-8188, 426-8160 or 663-2954

ATTRACTIVE DUPLEX—Almost

new, all electric, large rooms,

tile baths, range and refrigerator

on private back patio with lovely

view of hill, fenced yard, one large

bedroom each unit, black top road,

near N. Territorial, Dexter schools.

PORTAGE LAKE-front lot—60' by

175', quiet location, end of sea-

son bargain, only \$10,000.

CHARMING old farm home—on 11

acres, M-36 and Plainfield Rd.,

large barn, four bedrooms, struc-

tural sound and liveable, only

\$32,000. Bank will mortgage.

Shown by appointment only.

PATTERSON LAKE-FRONT—2-



## Community Calendar

Chelsea Camera Club, Oct. 19, 7:30 p.m. at Sylvan Township Hall. Paul Papendorf will present a program entitled "A Quick Look at National Parks and Monuments of the West." Guests welcome.

Washtenaw County Federation of Women's Clubs first regular meeting, Community House, Wilson Park, Milan, 1 p.m. Oct. 18. Board meeting at 12:30 p.m. precedes regular meeting. Program on "Washtenaw's People Resources," with Mrs. Ted Heath interviewing author Miss Esther Landwehr of Saline. A "Mini Art Show," composed of arts and crafts by club members. Anyone wishing to contribute to the show may call Mrs. Emma Dians, of Saline, at 429-7836.

Regular meeting of the Dexter Legion Post, Friday, Oct. 15, 8:30 p.m. Guest speaker: Sheriff Douglas Harvey. Lunch following the meeting.

Special Fair Board meeting, Oct. 27, 8 p.m. at Fair Services Center.

Chelsea Community Fair Party, Oct. 16, 8 p.m. at fairgrounds. All those who worked and assisted during the 1971 fair, and those who helped complete the new building, are invited.

Rogers Corners Extension Study Group, 7:30 p.m. Oct. 19 at the home of Mrs. Walter Wolfgang with Mrs. Elmer Bristle as co-hostess. Note change of time.

Chelsea Suburbanettes club, Oct. 21 at the home of Mrs. Art Stoll. Co-hostess, Mrs. William Van Riper. Speaker, anyone bringing a guest please call the hostess.

Sylvan Community Farm Bureau, Oct. 14, 8 p.m. Hosts will be Mr. and Mrs. Anton Nielsen and Mr. and Mrs. Duane Rowe.

American Legion and Auxiliary hospital equipment available by contacting Loren Keezer at 475-2766 or 475-3431.

Never-Rest Farmers Farm Bureau group, 8 p.m. Oct. 15 at the home of Mr. and Mrs. Earl Heller.

TOPS Club at library, Wednesday afternoon group, 12:30 p.m. For information call 426-4549. Tuesday evening group, 8 p.m. For information call 475-8952.

Esther Chapter, Oct. 21, 8 p.m. at the home of Lauryn White.

VFW Post No. 4067, tonight, Oct. 14, 8 p.m. Note change of date.

OCTOBER 1971						
1	2	3	4	5	6	7
8	9	10	11	12	13	14
15	16	17	18	19	20	21
22	23	24	25	26	27	28
29	30	31				

Chelsea Community Farm Bureau, Anton Nielsen home, Thursday, Oct. 14, 8 p.m.

Cub Scout Pack 445, 3rd annual family hayride, Saturday, Oct. 23, 6 p.m. at Stocks.

Modern Mothers, Oct. 27, 8 p.m. at the home of Mrs. Richard Cook for a Halloween party.

Paper Drive will be sponsored by the 4th grade class at Chelsea South Elementary school. Children will be canvassing the town Thursday and Friday, Oct. 21 and 22. For those who would like to deliver the papers to South school there will be a place ready for your papers. Thank you for your help.

Chelsea Rebekah Lodge No. 130, Oct. 19, 8 p.m. at the hall.

WRC, Monday, Oct. 18, 7:30 p.m. at Sylvan Town Hall.

Lyndon Study Extension Group, Thursday, Oct. 21, 12:30 p.m., Lyndon Town Hall. Installation of officers. Lesson is on low calorie diets.

Inquiries regarding the Chelsea blood bank may be directed to Harold Jones in the event that Mrs. Dudley Holmes is unavailable, or to Mrs. Pauline McKenna, American Red Cross in Ann Arbor, 971-5300.

## BIRTHS

A daughter, Jeanie Renee, to Mr. and Mrs. Glenn E. Heim, 124 Grant.

A daughter, Jeannie Kathleen, Oct. 6, to Mr. and Mrs. Larry D. Adams.

## Clothing Drive...

(Continued from page one)

sisted since the program got under way.

The House is open from 10 a.m. to 2 p.m. on weekdays, and from 10 a.m. to noon on Saturdays. "We do close on football Saturdays, and legal holidays," Mrs. Crabtree added.

The House has a great need for volunteers able to work on a regular basis. While most of the women who do work at "The House" are church women, church affiliation is not a pre-requisite for volunteers, Mrs. Crabtree said. Anyone wishing to make a contribution to "The House" may call Mrs. Merkel at 475-2739.

## DEATHS

### Gottlieb J. Bollinger

Had Farmed 48 Years  
At Bush Rd. Address

Gottlieb J. Bollinger, 82, 19450 Bush Rd., died Oct. 9 at the Chelsea Community Hospital.

Born May 6, 1889, in Lima township, he was the son of John and Marie Weber Bollinger. On Feb. 7, 1917, Mr. Bollinger married Elsie L. Kopp. She died March 17, 1961.

He operated a threshing rig in the Washtenaw county area for more than 25 years. He had farmed at the Bush Rd. address for the past 48 years.

He is survived by two sons, Paul of Chelsea, and Oscar, of Ann Arbor; a daughter, Mrs. Alvin (Rose Mary) Reinhardt, of Lyndon township; a sister, Mrs. Darwin (Cora) Downer, of Chelsea; 12 grandchildren and three great-grandchildren. He was preceded in death by a son, Wilbur, Aug. 22, 1971.

Funeral services were held at 1:30 p.m. Tuesday at the Staffan Funeral Home with the Rev. Daniel A. Klein officiating. Burial followed in Oak Grove Cemetery.

### Oscar J. Beuerle

Life-long Freedom Township Farmer Dies Sunday

Oscar J. Beuerle, 74, 7925 Ernst Rd., Manchester, a life-long Freedom township farmer, died Sunday at his home.

He was born May 16, 1897 in Freedom township, the son of John and Mathilda Raab Beuerle. On Sept. 27, 1922 he married Elsie Nissley. She survives.

Mr. Beuerle was a member of Bethel United Church of Christ in Freedom township.

Also surviving are two nieces and two nephews. He was preceded in death by an infant brother. Funeral services were held at 2 p.m. Tuesday at Bethel United Church of Christ with the Rev. Roman Reineck officiating. Burial followed in the church cemetery.

Memorial contributions may be made to the Bethel Church Building fund.

Funeral arrangements were by the Jenter Funeral Home.

### Mrs. Walter Mills

Chelsea Woman's Mother Dies at Convalescent Home

Mrs. Edith Mills, 79, 20938 Waterloo Rd., died Oct. 11 at the Whitmore Lake Convalescent Home.

She was born Sept. 12, 1892, in Nebraska county, Neb., the daughter of David and Cyrena Salsberry Huyck.

She married Robert Farmer April 30, 1910. He died Nov. 28, 1942. She married Walter Mills Nov. 8, 1947. He died Oct. 19, 1950.

She lived all of her married life in Detroit, moving to the Waterloo Rd. address in 1966, to make her home with her daughter, Mrs. Elden (Audrey) Beuhler.

She is survived by one son, Charles W. Green of Warren; one daughter, Mrs. Elden (Audrey) Beuhler; one brother, William Huyck, of Toledo, O.; one sister, Mrs. Ollie Gashche of Clio; two grandchildren and three great-grandchildren.

Funeral services will be held at 11 a.m. today, Thursday, Oct. 14, at the Staffan Funeral Home with H. Gordon Pollock officiating. Burial will follow in Oak Grove Cemetery.

"Where is the English Channel?" the teacher asked. A student blurted out, "I don't know. We can't get it on our set!"



Executives and Professional people... are sometimes victims of million dollar lawsuits. Protect yourself with **Auto-Owners UMBRELLA POLICY**

**A. D. MAYER AGENCY, INC.**

"Your Protection Is Our Business"

115 Park St. Chelsea  
Phone 479-5061

**Auto-Owners INSURANCE**  
Life • Casualty • Fire • Auto

### Glenn A. Schiller

Dies Sunday at Hospital Following Long Illness

Glenn A. Schiller, 27, 403 W. Middle St., died Oct. 10 in St. Joseph Mercy Hospital, Ann Arbor, following a long illness. He was born April 1, 1944, the son of Alvin and Faye Bagge Schiller. Mr. Schiller had been employed by the Ziegler Market in Dexter since his graduation from Chelsea high school.

He was recently given a Bravery Award by the Washtenaw County Sheriff's Department and a Certificate of Appreciation from the Chelsea Fire Department for his rescue of Mrs. Amanda Schiller, 312 South St. from her burning home April 30, 1971. Mrs. Schiller, a distant relative, died several days later from burns sustained in the fire.

Surviving are his mother, Mrs. Alvin (Faye) Schiller, of Chelsea; four sisters, Mrs. Roy (Lois) Mitchell, of Saline, Mrs. Linda Craft, of Chelsea, Mrs. Robert (Barbara) Lemaster, of Chelsea, and Mrs. Ray (Patricia) Turner, also of Chelsea.

Funeral services will be held at 2 p.m. today, Thursday, Oct. 14, at the Staffan Funeral Home with the Rev. Daniel A. Klein officiating. Burial will follow in Oak Grove Cemetery.

### Daniel E. Reilly, Sr.

Well-Known Through Area As Threshing Rig Operator

Daniel E. Reilly, Sr., 80, of Clinton, died Friday, Oct. 8, at Herrick Nursing home in Tecumseh after a long illness.

Born Jan. 4, 1891, he was the son of James and Mary Sweetman Reilly. He married Grace Hudson of Gregory in 1911. She died in 1936. He then married Genevieve Spout then of North Lake, in 1944. She survives.

After their marriage, they moved to a farm on Fisk Rd., near Clinton.

Mr. Reilly was a member of St. Dominic Catholic church and of the Washtenaw Farm Bureau. For 25 years he operated a threshing rig in Washtenaw and Livingston counties, where he was well-known for his good farming practices.

Other survivors are: four sons, Basil and Daniel E., Jr., both of Gregory, Gerald of Chelsea, and Harold, of Manchester; three daughters, Mrs. William (Mary) Bravender of Dansville, Mrs. Don (Laura) Roberts, of Dexter, and Mrs. Jack (Dorothy) Span, of Fallbrook, Calif.; a brother, Basil O'Reilly, of Battle Creek; a sister, Mrs. Elmer (Blanche) Carroll, of Detroit; 17 grandchildren, and 10 great-grandchildren. He was preceded in death by a son, Donald, and seven sisters.

Funeral services were held at 11 a.m. Monday, Oct. 11, in St. Dominic Catholic church in Clinton, with the Rev. Fr. Leon Kennedy officiating.

Burial followed in Mt. Olivet Cemetery, Chelsea.

Funeral arrangements were by Proctor Funeral Home, Clinton.

### Chrysler Dealer

(Continued from page one)

business here," Staffan said, "I've had tremendous support over the last eight years, and have made many valuable friends through the dealership."



KEEP 'EM MOVING: Mike Eubanks (left) and Terry Rickerman lift a rack of chickens cooked to a turn from one of the two 60-foot long barbecue pits used during the 16th annual Jaycees Chicken Barbecue Saturday. Chef Joe Doering points the

way as Chef Hank Orthing (behind Terry) and Ron Branham (behind Mike) look on. In the background, Doug Robeson and Terry Lawrence carry another rack of cooked birds away.

## 'Successful' Barbecue

How was the 16th annual Chelsea Jaycees' chicken barbecue and color tour?

According to chairman Bob Updegraff, "Everything went like clockwork."

The only difficulty encountered by the Jaycees was that the chickens were bigger than they had expected them to be—one and three-quarters pounds rather than one and one-quarter—so they took longer to cook.

Thus, the birds were a little slower coming off the fire than the Jaycees had expected, a line of hungry people formed, and the event lasted until almost 5 p.m.

The group sold 2,350 dinners, in spite of competition from the Dexter K. of C. chicken barbecue being held at the same time. The remaining 150 half chickens have

been quick frozen in bags of 10, and will be sold for 75 cents per half. Those wishing to order the frozen birds may call Bob Updegraff, 475-7481, or Walt Brown, 475-7634.

There were 26 Jaycees, 14 wives and Auxiliary members working on the barbecue, along with chief cooks Jim Gaken, Hank Orthing, Tim Orthing, Joe Doering, Merle Leach, Tim Ruhlrig and Terry Lawrence.

Lots of planning, hard work, and community co-operation went into the barbecue, the Jaycees' largest money making event every year.

Chelsea's Auxiliary Police directed traffic all day, 37 Cub Scouts

and Girl Scouts from Jaycee sponsored troops pitched in to fold boxes in the large Jiffy Mix truck that served as a supply depot and office during the event. Meabon's donated the parking space and running water. Hamburg Dairy loaned a milk truck and 3-D Sales & Service donated trucks as did John A. Klink Excavating. Spaulding Chevrolet donated the lot on which the barbecue was held, and Mark Schulze provided the manpower necessary to mow it.

Maps left over from the color tour will be available at the village offices and at Chelsea Drug, Updegraff said.

## Circle-K Club Goals Outlined For Kiwanians

Three members of the Ann Arbor Kiwanis sponsored Circle-K Club presented a program on a Wisconsin Circle-K Club's efforts to clean up a river at the weekly Kiwanis club dinner meeting Monday night.

Paul Smock, a senior at the University of Michigan and District Governor of Michigan Circle-K, Walter Henne, Circle-K Division 10 chairman, and Jerry Lutz, chairman for Circle-K programs, presented a slide program illustrating the efforts the Kenosha, Wis. Circle-K club made over a five year period to clean up the Pine River.

During the five years, the three said, there was a dramatic change in the landscape along the river, as well as a reversal of the attitudes of the townspeople regarding trash disposal.

Circle-K clubs for college age men, and Key Clubs for high school boys, came about through the efforts of the International Kiwanis clubs to bridge the communications gap between youths and adults.

The Circle-K club at the University of Michigan is involved this year in aiding handicapped children at Mott Children's Hospital in Ann Arbor.

## Homecoming

(Continued from page one)

during the half-time program Friday by master of ceremonies Tim Merkel, and Karen Maurer, last year's Homecoming Queen.

Candidates elected as of Tuesday night are: senior class, Karen Hume and Connie Orlovski; junior class, Christi McClansky and Connie Wireman; and sophomore class, Amy Enderly.

## WE HAVE A HUNCH

WE'RE SELLING MORE KITCHENS  
THAN ANYONE ELSE  
IN WASHTENAW COUNTY!

Here Are Four Good Reasons:

★ WOOD-MODE  
★ DUTCHCRAFT  
★ MERILLAT

AND

THE AREA'S LOWEST PRICES  
FOR COMPARABLE CABINETRY!

### FREE KITCHEN-PLANNING SERVICE

We do the measuring & planning, guided by your preferences. We submit a sketch for your approval, together with a complete price for the Cabinets & Countertops for your new kitchen.

WON'T YOU CALL OR COME IN SOON?

PHONE 475-3391

# CHELSEA LUMBER CO.

VAN HEUSEN

417



fashion makes a printed statement  
Big, bold prints are making fashion news today. This is the headliner of the season! Styled with:

• long point Brooke collar • newsworthy 2-button cuffs • 65% Dacron® polyester, 35% cotton. \$9.00

**STRIETER'S**  
MEN'S WEAR

"The Place To Go for Brands You Know"

\*Du Pont Reg. Lm.



# THE SUPERMARKET THAT'S JUST A LITTLE BIT BETTER

# Stop & Shop

14901 Old U.S.-12  
Corner at M-52  
Chelsea

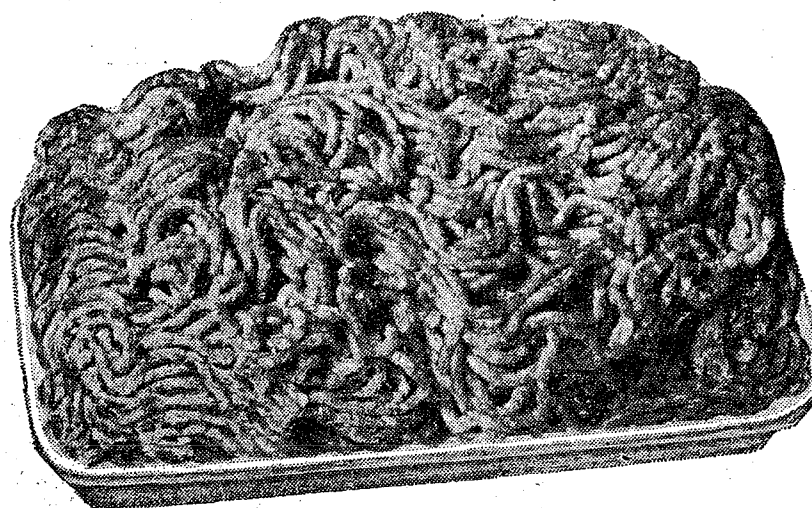


Ground Fresh Many Times Daily!

## THE KNOW HOW OF INTELLIGENT MEAT BUYING IS REALLY 'KNOW WHERE'

Our customers have learned to depend on the outstanding quality of Stop & Shop meats — unfailing satisfaction with every cut they purchase. The finest quality, together with the experienced expertise of our meat cutting experts, makes an unbeatable combination!

Prices Effective Thursday, October 14, 1971,  
through Sunday, October 17, 1971.



TOP QUALITY! 100% PURE BEEF!

## FRESH GROUND HAMBURGER

# 59<sup>c</sup> lb.

Top Quality! "Trimmed-Rite" Fresh Boneless  
Boned! Rolled! Tied! **Pork Roasts . . . . 69<sup>c</sup> lb.**

Top Quality! "Trimmed-Rite" Fresh Boneless  
**Pork Cutlets . . . . 89<sup>c</sup> lb.**

Gordon's Breakfast  
**Link Sausage . . . . 89<sup>c</sup>**

Thin-sliced Meadowdale  
**Sliced Bacon . . . . 59<sup>c</sup>**

Top Quality! "Trimmed-Rite" Fresh  
**PORK ROASTS**

Boston Butt **49<sup>c</sup> lb.**

Top Quality! "Trimmed-Rite" Fresh  
**PORK STEAKS**

Practically Boneless **59<sup>c</sup> lb.**

U.S.D.A. Choice Boneless Bottom  
**Round Steaks . . . . \$1<sup>19</sup> lb.**

U.S.D.A. Choice Boneless Top  
**Round Steaks . . . . \$1<sup>29</sup> lb.**

U.S.D.A. Choice Boneless Beef  
**Cube Steaks . . . . \$1<sup>39</sup> lb.**

Peschke's Sliced  
**Boiled Ham . . . . 99<sup>c</sup>**

WE  
RESERVE  
THE  
RIGHT  
TO  
LIMIT  
QUANTITIES

For Your  
Convenience  
**OPEN  
SUNDAY**  
10 a.m. - 5 p.m.  
All Sale Prices  
Effective  
Sundays

Sorry,  
No Sales  
To Dealer

STORE HOURS:  
MONDAY  
thru  
SATURDAY  
9 a.m. to 9 p.m.  
SUNDAY  
10 a.m. to 5 p.m.

CARNIVAL

## ICE CREAM

**1/2 gal. 44<sup>c</sup>**

CARNIVAL

## ICE CREAM SANDWICHES

**2 6 Sandwich Pkgs. 75<sup>c</sup>**

McDONALD

## COTTAGE CHEESE

**1-Lb. Crtn. 29<sup>c</sup>**

SWEET, JUICY

## McINTOSH APPLES

**3-Lb. Bag 29<sup>c</sup>**

**Courteous, Friendly Service**

For Your Shopping Convenience . . .

**STORE HOURS:**  
Monday thru Saturday  
9 a.m. to 9 p.m.  
Sunday, 10 a.m. to 5 p.m.

**Plenty of FREE PARKING**

MICHIGAN

## SUGAR

**5-Lb. Bag 49<sup>c</sup>**

## PEPSI-COLA

**8 10-Oz. One-Way Bottles 79<sup>c</sup>**

KLEENEX

## FACIAL TISSUES

**200-Count Pkg. 2-Ply 4 pkgs. \$1**

## ICE COLD BEER & WINE

### Farm Fresh Produce

U. S. No. 1 Michigan  
**JONATHAN APPLES . . . . 39<sup>c</sup>**  
Fresh, Crisp  
**CARROTS . . . . 12<sup>c</sup>**  
Fresh, Crisp  
**NEW CABBAGE . . . . 8<sup>c</sup>**  
Tender  
**GREEN ONIONS . 2 Bunches 25<sup>c</sup>**

HI - C

## FRUIT DRINKS

**46-Oz. Can 25<sup>c</sup>**

McDONALD LOW FAT

## MILK

**Plastic Jug Gal. 69<sup>c</sup>**

NORTHERN ORCHARDS

## APPLE CIDER

**Gallon Jug 88<sup>c</sup>**

U. S. NO. 1 MICHIGAN

## DELICIOUS APPLES

**3-Lb. Bag 49<sup>c</sup>**

U. S. NO. 1 MICHIGAN FRESH

## POTATOES

**20-Lb. Bag 69<sup>c</sup>**

U. S. NO. 1 MICHIGAN

## YELLOW ONIONS

**3-Lb. Bag 28<sup>c</sup>**









# BOWLING NEWS



## Senior House League

Standings as of Oct. 11

	W	L
Auldred Chevrolet	15	5
Bar Builders	14	6
Chesla Cleaners	14	6
Barber Shop	11 1/2	8 1/2
Bar	11	9
Ivan Center	10	10
itz's Tavern	10	10
na No. 1	10	10
Chesla Grinding	8 1/2	11 1/2
phy's Barber shop	7	13
hendler's Grocery	5	15
na No. 2	4	16

500 series: A. Fletcher, 518; D. Eder, 504; L. Fahrner, 559; L. Kee, 503; D. Bauer, 509; R. Bauer, 503; M. Poertner, 531; N. Fahrner, 503; A. Sannes, 526; J. Jones, 543; Lawrence, 529; C. Genske, 512; McClellan, 531; R. Spaulding, 531; J. Hess, 530; T. Kruse, 500; Slane, 542; D. Coppertoll, 519; Clemens, 534; H. Burnett, 553; Cruse, 524; M. Sweet, 537; D. Murphy, 545; W. Moss, 522; H. rton, 598.

200 games: M. Kern, 202; D. Eder, 226; L. Fahrner, 200; M. Poertner, 213; N. Fahrner, 201; Sannes, 201; J. Jones, 200; R. auldred, 200; T. Kruse, 201; H. rnett, 213; M. Sweet, 210; W. oss, 219; H. Morton, 213.

## Charlie Brown & Snoopy's Friends Prep Division

Standings as of Oct. 9

	W	L
ood Guys	12	3
n Fighters	12	3
arcats	11	4
ip Flop Mop Tops	11	4
e Pros	7 1/2	7 1/2
ikers	5	7
stangs	5	10
lupps	3	12
ntastic 5	2 1/2	9 1/2
agles	2	13

Games over 100: C. Collins, 125; Milliken, 131, 108; J. Sweet, 9, 116; B. Lewis, 104; K. Mshar, 14, 124; C. Sannes, 133, 109; D. raft, 118, 170; P. Greenleaf, 107, 14; J. Verwey, 102; D. Alexander, 21; D. Thompson, 122, 113; J. rench, 102; M. Schmitt, 111; B. alishchek, 130.

Series over 200: C. Collins, 211; Milliken, 239; J. Sweet, 245; Mshar, 228; C. Sannes, 252; D. raft, 288; P. Greenleaf, 241; D. ompson, 235; M. Schmitt, 201; Kalishchek, 214.

## Rolling Pin League

Standings as of Oct. 12

	W	L
ookie Cutters	15 1/2	8 1/2
egg Beaters	15	9
opper Uppers	14	10
olly Mops	13 1/2	10 1/2
Spooners	13	11
itchen Kapers	13	11
rinkers	11	13
Pots	11	13
Mixers	11	13
Dish Rags	9	15
Coffee Cups	9	15
Brooms	9	15

400 and over series: P. Harook, 440; G. Klink, 400; G. Blaess, 432; J. Priest, 438; S. Parker, 409; K. Del Prete, 462; J. Edick, 468; J. Myers, 416; C. Shepherd, 409; J. Rabbit, 491; E. Reynolds, 454; L. Orlovski, 444.

140 and over games: P. Harook, 171, 146; J. Lewis, 162; G. Klink, 140, 145; G. Blaess, 149, 151; J. Priest, 162, 141; G. Greenleaf, 141; S. Parker, 151; D. Dirlam, 154; K. Del Prete, 167, 154; J. Edick, 163, 161, 154; E. Williams, 153; J. Myers, 165; C. Shepherd, 140, 145; J. Rabbit, 162, 177, 152; E. Reynolds, 148, 170; D. Butler, 147; W. Waldecker, 173; M. McClan-skey, 153; L. Orlovski, 171.

Splits converted: W. Waldecker, 2-7; E. Griffin, 6-7-10; E. Williams, 5-6; H. Ringe, 4-5; W. Meranuck, 5-6-10; S. Parker, 210.

## Chelsea Nite Owl League

Standings as of Oct. 11

	W	L
Pump & Pantry	15	5
Steele's Heating	13	7
Chelsea Finance	12	8
Heller Electric	11	9
Foster's Men's Wear	10	10
Smith's AAA	10	10
Cavanaugh Lake Store	10	10
Team No. 8	10	10
Jack & Son Barbers	8	11
Ted's Standard	12	12
McCalla Mobile Feeds	6	14
Arco Sparks	6	14

500 series: J. Elliott, 565; G. Packard, 555; W. Maier, 549; T. Steele, 542; E. Buku, 536; A. Peterson, 527; R. Woods, 524; J. Turner, 520; G. Rentschler, 518; J. Eder, 511; A. Fletcher, 510; J. Herrick, 505; R. Green, 502; M. Packard, 501.

200 games: J. Turner, 216; A. Fletcher, 214; T. Steele, 204; G. Packard, 203; J. Eder, 200; G. Rentschler, 200.

## Tri-City Mixed League

Standings as of Oct. 8

	W	L
Jiffy Mixes	17	7
Poor Mobil	16	8
Trail Blazers	15	9
Jiffy Market	14	10
3-D Sales & Service	13	11
Wolverine Tall & Small	13	11
Sprague Buick & Olds	13	11
Chelsea Cleaners	11	13
Smith's Service	9	15
4-W's	9	15
Stiver's	8	16
Heydlauff's Appl.	6	18

500 series, men: B. Cruse, 508; C. Dettling, 525; D. Dettling, 534; D. Eder, 529; W. Griffith, 523; E. Harook, 535; H. Kunzelman, 516; C. Miller, 533; D. Scott, 508; T. Wisniewski, 555.

200 games, men: C. Dettling, 200; D. Eder, 211; W. Griffith, 219; H. Kunzelman, 223; T. Wisniewski, 229.

450 series, women: G. Dettling, 515; D. Fouty, 473; B. Parish, 471.

150 games, women: V. Allen, 161; E. Dettling, 184; G. Dettling, 190, 162, 173; B. Fike, 169; D. Fouty, 168, 197; R. Harook, 169; B. Parish, 170, 166; C. Peterson, 162; J. Stapish, 162; C. Stoffer, 160.

## Junior House League

Standings as of Oct. 7

	W	L
Wolverine No. 1	33	9
The Pub	30	12
J. & S Tool	28	14
Chelsea Lanes	24	18
Gambels	23	19
Bob's Beefers	21	21
Boyer Automotive	20	22
Smith's AAA Service	19	23
3-D Sales & Service	17	25
No. Amer. Rockwell	14	28
Wolverine No. 2	12	30
Jiffy Mix	11	31

200 games: F. Barkley, 213; H. Burnett, 200; R. Erskine, 201; J. Wahl, 243; D. Eder, 202; D. Scott, 204; S. Hopkins, 207; D. White, 211, 207; A. Fletcher, 203; G. White, 207; W. Beeman, 200; 224; D. Buku, 204; J. Harook, 215; L. Salyer, 206; N. Fahrner, 223; B. Johnson, 206, 211; J. Toma, 222; K. Larson, 223; A. Fleischman, 212, 229; E. Ringe, 211.

600 series: D. White, 603; W. Beeman, 602; B. Johnson, 614; J. Toma, 613.

500 series: F. Barkley, 538; H. Burnett, 537; T. Tuttle, 520; J. Wahl, 563; G. Parker, 511; D. Eder, 571; D. Scott, 543; S. Hopkins, 510; E. Greenleaf, 520; T. Steele, 532; G. White, 554; A. Fletcher, 536; N. Packard, 500; C. Keongter, 567; J. Harook, 529; L. Salyer, 546; N. Fahrner, 574; A. Sannes, 538; R. V. Worden, 522; O. Johnson, 527; K. McMannis, 529; A. Fleischman, 534; B. Ringe, 544.

## Hi Point Mixed League

Standings as of Oct. 5

	W	L
Alley Katz	128	88
Four Squares	124	92
Knock Outs	121	95
Dreadnaughts	118	98
Flat Tires	117	99
River Rats	112	104
Ding-a-Lings	109	107
Station WVPP	101	115
Holy Terrors	100	116
Question Marks	96	120
Hi Steppers	91	125
Easy Riders	79	137

Men, over 450 series: D. Crum, 512; P. Fletcher, 495; M. Purdy, 505; O. Inbody, 499; H. Morton, 483.

Men, over 160 games: P. Fletcher, 176, 162; D. Crum, 183, 186; M. Purdy, 182, 172; O. Inbody, 192; K. Lofquist, 182; M. Gehringer, 160; F. Steers, 173; H. Morton, 162, 170.

Women, over 425 series: G. De-Smith, 510; P. Crum, 446; P. Guenther, 448; C. Teachworth, 431; S. Walton, 476; M. Morton, 429; C. Sowle, 469.

Women, over 150 games: G. De-Smith, 177, 168, 165; B. McNutt, 174; P. Crum, 181; D. Purdy, 151; P. Guenther, 155, 158; B. Barth, 159, 151; C. Teachworth, 169, 160; S. Walton, 169, 169; M. Morton, 163; C. Sowle, 155, 186.

## Old Timers League

Standings as of Oct. 9

	W	L
Hartman Ins.	14 1/2	5 1/2
Sportsman's Bar	14	6
Bob & Otto Standard	12	7 1/2
Hotzel Service	12	8
Colonial Lanes	12 1/2	8 1/2
Has Beens	11 1/2	8 1/2
Nelson Realtors	11	9
Sanford Security Serv.	10	10
Stein & Goetz	9 1/2	10 1/2
Merkel Furniture	8 1/2	11 1/2
Dexter Bowl 'n' Bar	9	11
Cloverleaf Lanes	8	12
Team No. 14	7 1/2	12 1/2
Team No. 16	6	14
Lucky 13	5 1/2	14 1/2

High team game: Mather Co. 902.

High team series: Has Beens, 2,497.

High ind. game: W. Wysocki, 227.

## Leisure Time League

Standings as of Oct. 12

	W	L
The Nags	11	5
Team No. 2	11	5
Alley Cats	8	8
Team No. 6	7	9
Rug Rats	6	10
The Mums	6	11

400 series: D. Thompson, 427; V. Wheaton, 409; K. Haywood, 412.

Over 140 games: D. Thompson, 160, 165; V. Wheaton, 147; K. Haywood, 175; S. Centilli, 143; S. Weston, 143.

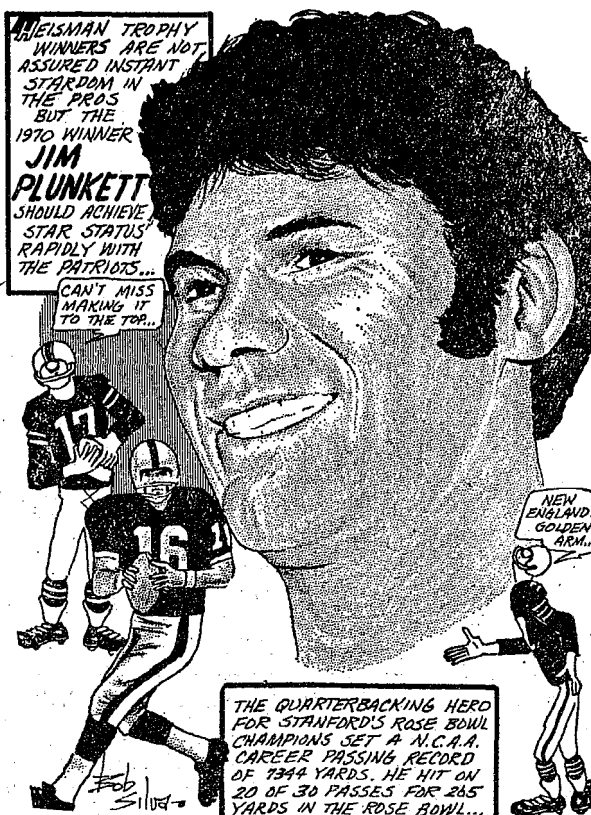
## Chelsea Suburban

Standings as of Oct. 6

	W	L
Dairy Queen Braizer	16	4
Patty Ann	14	6
Artex Roll-Ons	13 1/2	6 1/2
Dana	13	7
Chelsea Lanes	11	9
Frisinger Realty	10	10
Pittsfield Plastics	10	6
Dancer's	8	12
Poor Mobil	7	13
Waterloo Garage	6	10
Chelsea State Bank	4	16
State Farm	3 1/2	16 1/2

150 games and over: J. Fitzsimmons, 433; P. Harook, 169; M. Paul, 152, 156; G. DeSmith, 166; B. Smith, 164; N. Prater, 155, 154; G. Baczynski, 154; M. Olson, 174.

# SPORTS CORNER



180; E. Miller, 151; B. Hafley, 158; R. West, 166, 161, 167; R. McGibney, 179; G. Wilkerson, 175; D. DeLaTorre, 164; D. Sannes, 153, 163; M. Abdon, 154; A. Wood, 150; J. Kipfmiller, 170; V. Harvey, 161; A. Hocking, 162; J. Proctor, 166; S. Bowen, 161; N. Packard, 158; J. Buku, 192, 161; B. Fike, 158, 160.

425 series and over: M. Paul, 437; B. Smith, 428; N. Prater, 436; M. Olson, 472; W. Hafner, 433; B. Hafley, 429; R. West, 494; R. McGibney, 446; G. Wilkerson, 452; D. DeLaTorre, 438; D. Sannes, 447; A. Hocking, 445; J. Proctor, 441; S. Bowen, 448; B. Eder, 427; J. Buku, 491; B. Fike, 440.

## Chelsea Lanes Mixed

Standings as of Oct. 8

	W	L
Fitzsimmons Exc.	24	11
Meabon's	23	12
Marsh & Eder	22	13
Bollinger Sanitation	21	14
Jarvis & Goltra	20	15
Chelsea Lanes	17	18
A. A. Centerless	17	18
Barkley & Gephart	16	19
Heim & Arrington	16	19
Morgan & Turner	12	23
The Pub	12	23
Sable's Collision	10	25

Women's 150 games: B. Smith, 179; L. Gilmore, 169, 179, 166; D. Cozzens, 172, 152; K. Gephart, 169, 171; L. Alexander, 169, 167, 161; F. Gephart, 168; D. Alber, 167, 169; N. Keezer, 166; L. Jarvis, 161; M. Heim, 158; D. Eder, 154; A. Turner, 150, 152.

Women's 450 series: L. Gilmore, 514; L. Alexander, 497; D. Alber, 460; B. Smith, 460; F. Gephart, 452; N. Keezer, 452.

Men's 175 games: D. Eder, 181, 223, 227; E. Greenleaf, 203, 184; D. Alexander, 201; R. Morgan, 201, 179; A. Keezer, 199, 190, 175; J. Goltra, 190, 181; M. Packard, 186, 183, 191; R. Bauer, 185, 182; F. Barkley, 179; L. Keezer, 179.

Men's 475 series: D. Eder, 631; A. Keezer, 564; M. Packard, 560; E. Greenleaf, 558; R. Morgan, 551;

162; R. Collins, 130, 134, 150. Series over 350: T. Abdon, 360; J. Toon, 368; B. Skittenhelm, 425; L. Hafner, 404; K. Romine, 377; D. Eisele, 373; M. Fahrner, 368; S. Lyerla, 352; D. Messner, 346; D. Alber, 419; S. Bowen, 366; R. Collins, 434.

## Chelsea Women's Bowling Club

Standings as of Oct. 6

	W	L
Parish's Cleaners	16	4
Chelsea Milling	15	5
Jiffy Market	15	5
Wolverine Bar	12	8
Washtenaw Eng.	12	8
Chelsea Lanes	10	10
Jiffy Mixes	9	11
Schneider's Grocery	9	11
Schumm's	8	12
Community Serv. Press	7	13
Norris Electric	5	15
N. American Rockwell	2	18

450 series or over: P. Poertner, 523; R. Hummel, 503; P. Fitzsimmons, 498; S. Klink, 492; B. Parish, 489; B. Fritz, 478; N. Kern, 468; D. Eisenman, 463; D. Alber, 456.

150 games or over: P. Poertner, 177, 184, 182; R. Hummel, 169, 203; P. Fitzsimmons, 195, 179; S. Klink, 150, 205; B. Parish, 191, 176; B. Fritz, 165, 167; N. Kern, 188; D. Eisenman, 167, 176; D. Alber, 171; A. Sindlinger, 151; P. Shoemaker, 156; J. Rowe, 157, 154; D. Verwey, 157; C. Stoffer, 155; R. Lutovsky, 150, 158; P. Wurster, 157; A. Knickerbocker, 180; B. Mshar, 163; A. Boham, 173; J. Montgomery, 165; B. Weeks, 157; M. Kruse, 160; B. Larson, 164; C. Bradbury, 166; D. Fouty, 169, 152; D. Frisbie, 161; L. Orlovski, 158; J. Hafner, 150; A. Alexander, 180; M. E. Sutter, 153; A. Turner, 150.

## Junior Swingers

Standings as of Oct. 9

	W	L
The B.C.'s	14	6
The B.B.A.	12	8
The Rods	10	10
The Strikers	10	10
The "74" Swingers	10	10
The Pin Pushers	9	5
The Chaplans	9	11
Sat. Strikers	7	13

Games over 130: T. Abdon, 143; J. Toon, 152; B. Skittenhelm, 131, 151, 149; L. Hafner, 146, 145; K. Romine, 135; D. Eisele, 141; K. Harris, 153; M. Fahrner, 150; S. Lyerla, 141; D. Messner, 147, 131, 168; D. Allen, 167, 134; S. Bowen, 166, 168; D. Allen, 167, 134; S. Bowen, 166, 168.

## Service Men's Corner

Serving in Vietnam

U. S. Army, Vietnam—Army Private First Class Michael H. Reilly, 19, son of Mr. and Mrs. Basil Reilly, 13225 North Territorial Rd., Gregory, Mich., recently was assigned to the 1st Cavalry Division in Vietnam.

Pfc. Reilly is a rifleman in Company D, 2nd Battalion, 8th Cavalry of the Division near Bien Hoa.

The temperature of fluid lava, may range from 1,600 to 2,000 degrees F.

The Chelsea Standard, Thursday, October 14, 1971 9

## Michigan Reports 217 Lives Lost in Water Accidents

Michigan had a reported 565 water accidents in the first nine months this year which claimed 217 lives and injured 240 persons, according to State Police water safety unit records.

The totals represented decreases of 89 in accidents, 52 in deaths and 27 in injuries compared with the same period last year.

Of the accidents, 202 were catalogued as fatalities, 181 as injury and 182 as property damage only.

In the breakdown of deaths, biggest reduction was noted in the swimmer-wader category. There were 95 deaths in that group in the nine-month period this year, a decrease of 44 compared with 139 in that 1970 period.

Other death categories were comparable to last year figures shown in parentheses:

Boat operators 24 (33); boat passengers 38 (34); skiers and divers 6 (2); falls into water 37 (36); attempts to rescue 6 (5); snowmobile 2 (0); and miscellaneous 9 (20).

Of the 1971 deaths, 24 occurred in swimming pools and 39 while fishing. Of the victims drowned, 24 were under five years old.

## Golf Team Downs Saline, Loses to Dexter

Chelsea golfers won one close one and lost another in team competition last week.

Chelsea took a road win from Saline last Tuesday, winning with a score of 176-180. Leading the way were Mark Policht with a 41, Glen Musolf and Dave Powers with 43, and Craig Alter with 49 for nine holes.

Chelsea came within three points of winning, but actually lost to Dexter, 188-190, at Inverness Country Club last Thursday. Mark Policht and Glen Musolf both shot 44, Dave Powers, 49, and Ken Kusterer, 53.

In the Pinckney Invitational Golf Tournament, Chelsea ranked seventh out of eight teams competing, with a team score of 359. Two teams, Brighton and Stockbridge, tied for the win with team totals of 338.

Mark Policht and Dave Powers led the way for Chelsea with 85, Craig Alter shot a 94, and Glen Musolf a 95.

Chelsea golfers met Saline Tuesday, and will have a rematch with Dexter this afternoon at Inverness Country Club golf course beginning at 4 p.m.

On Saturday, Oct. 16, the golfers will travel to Grand Blanc to participate in the State Regional Golf Tournament.

## Dana Corp. Declares Year-End Dividends

The Board of Directors of Dana Corp. has declared a dividend of 3 1/4 cents per share on the Common Stock payable Dec. 15, 1971, to stockholders of record Nov. 26, 1971, and a quarterly dividend of 93 1/4 cents per share on the cumulative Preference Stock 3 1/2 percent Series A, payable Jan. 14, 1972, to stockholders of record Dec. 31, 1971.

## CHS Football Schedule

Oct. 15—Novi .....away  
Oct. 22—Dundee .....home  
Oct. 29—South Lyon .....away  
Nov. 5—Milan .....home  
Nov. 12 .....Jackson N.W. ....away

Subscribe today to The Standard!

### SQUIRREL HUNTERS

**DON'T THROW AWAY THOSE TAILS**  
We pay \$8 ea. for good quality Gray Squirrel tails, 10¢ for Fox Squirrel tails. An additional 2¢ ea. for premium quality. Postage refunded on 50 or more tails.

Send to: **Mepps**  
P. O. Box No. 859  
Antigo, Wis. 54409

## Attention Bowlers!

# SCOTCH DOUBLES

## SUNDAY, OCT. 17

8 p.m.

### Sign Up Now!

### YOUTH BOWLING LEAGUES

There is still room in all divisions of our youth leagues. Join your young friends and bowl on one of the following leagues:

**PREP DIVISION, 9:00 a.m.—10 to 12 years of age who have not reached their 13th birthday as of Aug. 1, 1971.**

**PEANUT DIVISION, 11:30 a.m.—7-9 years of age who have not reached their 10th birthday as of Aug. 1, 1971.**

**JUNIOR-MAJOR DIVISION, 2:00 p.m.—13 to 18 years of age.**

# CHELSEA LANES

1180 M-52 Phone 475-8141

## THE BOLD LOOK

of a

# CHELSEA JAYCEE

Join the New Breed of Leaders!

# CHELSEA JAYCEES

CLIP AND SEND TO P. O. BOX 277, CHELSEA, MICH. 48118

Name \_\_\_\_\_

Address \_\_\_\_\_

Phone \_\_\_\_\_ Age \_\_\_\_\_</



## + Services in Our Churches +

**ST. PAUL  
FED CHURCH OF CHRIST**  
Rev. Warner Siebert, Pastor  
Sunday, Oct. 14—  
10 p.m.—Board of Christian  
Education.  
Monday, Oct. 16—  
10 a.m.—Junior High confir-  
mation program.  
Tuesday, Oct. 17—  
10:30 a.m.—Sermon title: "A  
Christian Diet."  
Wednesday, Oct. 18—  
10 p.m.—Sunday School teach-  
ing.

**LAGE UNITED METHODIST  
CHURCH OF WATERLOO**  
8118 Washington St.  
Mrs. Altha Barnes, pastor  
Sunday—  
9:00 a.m.—Sunday school.  
11:15 a.m.—Morning worship.  
1:30 p.m.—Third Sunday school.  
4:00 p.m.—Youth Fellowship at  
Lage Church Sunday school  
house.

**ST. JOHN'S EVANGELICAL  
AND REFORMED CHURCH**  
(United Church of Christ)  
Francisco  
The Rev. Robert Townley  
Sunday—  
10:00 a.m.—Worship service.  
10:20 a.m.—Sunday school.

**FIRST UNITED METHODIST  
CHURCH OF WATERLOO**  
Parks and Territorial Rds.  
Mrs. Altha Barnes, Pastor  
Sunday—  
9:15 a.m.—Morning worship.  
10:30 a.m.—Sunday school.  
1:30 p.m.—Third Sunday school.  
7:00 p.m.—Youth Fellowship at  
Lage church Sunday school  
house.

**OUR SAVIOR  
LUTHERAN CHURCH**  
Rebekah Hall, 4194 M-52  
The Rev. William H. Keller, Pastor  
Sunday—  
9:00 a.m.—Sunday school.  
10:30 a.m.—Worship service.  
Tuesday—  
3:30-5 p.m.—Confirmation I.  
Every Thursday—  
4:00-5:30 p.m.—Confirmation II.  
Every Saturday—  
9:00 a.m.-11:00 a.m.—Confirma-  
tion III.

**ST. MARY CATHOLIC CHURCH**  
The Rev. F. Francis Wabowick  
Every Saturday—  
7:30 p.m.—Mass.  
Every Sunday—  
Masses at 6:30 a.m., 8:00 a.m.  
10:00 a.m., and 11:30 a.m.

**ST. THOMAS  
EVANGELICAL LUTHERAN**  
The Rev. Daniel L. Mattson,  
Pastor  
Saturday, Oct. 16—  
9:00 a.m.—Confirmation class.  
Sunday, Oct. 17—  
10:00 a.m.—Communion service.  
11:00 a.m.—Sunday school and  
Bible class.  
Tuesday, Oct. 19—  
8:00 p.m.—Evangelism Work-  
shop at the parsonage.  
Wednesday, Oct. 20—  
7:30 p.m.—Concordia Bible In-  
stitute.

**IMMANUEL BIBLE CHURCH**  
145 E. Summit St.  
The Rev. LeRoy Johnson, Pastor.  
9:45 a.m.—Sunday school, nur-  
sery provided.  
11:00 a.m.—Morning worship,  
nursery provided.  
7:00 p.m.—Evening service.  
Every Wednesday—  
Family hour, prayer meeting and  
Bible study.

**ST. JOHN'S EVANGELICAL  
AND REFORMED CHURCH**  
(United Church of Christ)  
Rogers Corners  
The Rev. David J. Kleis  
Every Sunday—  
9:30 a.m.—Sunday school.  
10:30 a.m.—Morning worship.

**CHURCH OF CHRIST**  
18661 Old US-12, East  
Lionel S. Burger, Minister  
Every Sunday—  
10:00 a.m.—Church school.  
11:00 a.m.—Worship service.  
6:00 p.m.—Worship service.  
Every Wednesday—  
7:30 p.m.—Bible Study.

**CHELSEA BAPTIST CHURCH**  
337 Wilkinson  
The Rev. James Stacey, Pastor  
Every Sunday—  
10:00 a.m.—Sunday school.  
11:00 a.m.—Worship service.  
Nursery care available during all  
services.  
6:00 p.m.—Junior and Senior  
Baptist Youth Fellowship.  
7:00 p.m.—Evening worship.  
Every Wednesday—  
7:30 p.m.—Bible study and  
prayer meeting.

## THE BIBLE ANSWERS

**QUESTION:** I would like you to answer a question in reference to Jesus as found in Matt. 22:42 "What think ye of Christ? whose son is he?"

**ANSWER:** That Jesus lived is a historical fact that cannot be ignored or denied. Unlike the founders of mythical religions, Christ was a real person, and all historical evidence supports this fact. But Jesus was more than just a historical figure as we see from the inspired Word of God.

His Pre-existence. In John's prologue (John 1:1-4) Jesus is set forth as being coequal and coeternal with God. He was "in the beginning" (cf. Gen. 1:26). The sun, moon, the earth and all things therein were made by him and for him and indeed he was before them. (Colossians 1:16,17; Hebrews 1:2).

His Human and Divine Characteristics. He is Immanuel because He is the God-man. Being born of a virgin with a heavenly Father, would demand a human and divine nature. (Matt. 1:23; Isaiah 7:14) John wrote that the "Word was made flesh." John 1:14. Jesus most often referred to Himself as "son of man," thus showing His nature and identity with man. But one should not conclude He was mere man for He also claimed to be the Son of God. He testified that He was God's Son (Matt. 26:63-64). He claimed and demonstrated omniscience (John 2:25; Mark 2:8). In a prayer he asked, "And now, O Father, glorify thou me with thine own self with the glory which I had with thee before the world was" (John 17:5). Paul also taught that Jesus is the personal manifestation of God and that He is deity (Colossians 1:15; 2:9).

## CHURCH OF CHRIST

For questions or comments please write:  
13631 Old US-12, Chelsea, Mich. 48118

**ZION LUTHERAN CHURCH**  
Corner of Fletcher, Waters Rds.  
(Rogers Corners)  
The Rev. John R. Morris, Pastor  
Thursday, Oct. 14—  
9:00 a.m.—Church and Parish  
Hall cleaning day. Bring pot-luck.  
7:15 p.m.—Junior Choir.  
8:00 p.m.—Senior Choir.  
7:00 p.m.—Luther League  
Barn Party at J. Savage home.  
Members only.  
Saturday, Oct. 16—  
Youth Instruction Classes.  
9:00 a.m.—9th grade.  
10:00 a.m.—10th grade.  
11:00 a.m.—7th grade.  
Sunday, Oct. 17—  
Laymen's Sunday.  
9:00 a.m.—Sunday school.  
10:15 a.m.—Worship.  
Tuesday, Oct. 19—  
10:00 a.m.—Sewing day. Noon  
pot-luck. All women welcome.  
Wednesday, Oct. 20—  
7:30 p.m.—Sunday school staff.

**CONGREGATIONAL CHURCH**  
(United Church of Christ)  
The Rev. Daniel Kelin, Pastor  
Every Sunday—  
9:00 a.m.—Senior High Sun-  
day school.  
9:45 a.m.—Sunday school.  
10:00 a.m.—Morning worship.

**FIRST CHURCH OF CHRIST,  
SCIENTIST**  
1883 Washtenaw Ave., Ann Arbor  
Sunday, Oct. 17—  
10:30 a.m.—Sunday school.  
10:30 a.m.—Morning service.  
Lesson-sermon: "Doctrine of  
Atonement."

**NORTH LAKE  
UNITED METHODIST CHURCH**  
The Rev. Harry Weeks, Pastor  
Every Sunday—  
9:30 a.m.—Worship service  
10:30 a.m.—Sunday school.

**SALEM GROVE  
UNITED METHODIST CHURCH**  
The Rev. Harry Weeks, Pastor  
Every Sunday—  
10:00 a.m.—Sunday school.  
11:00 a.m.—Worship service.

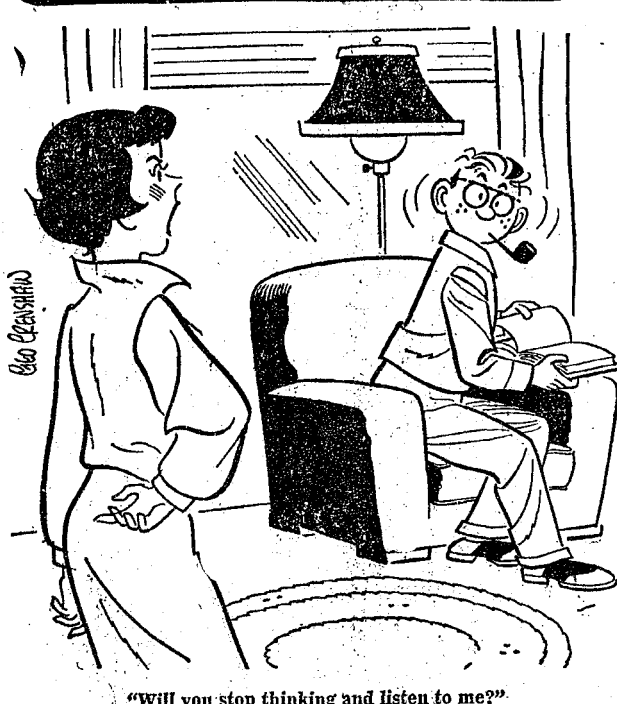
**FIRST UNITED  
METHODIST CHURCH**  
The Rev. Clive Dickens, Pastor  
Every Sunday—  
9:00 a.m.—Sunday school. Nur-  
sery through adult.  
10:00 a.m.—Worship service.

**GREGORY BAPTIST CHURCH**  
The Rev. Grant Lapham, Pastor  
Every Sunday—  
10:00 a.m.—Worship service.  
11:15 a.m.—Church school.  
6:30 p.m.—Baptist Youth Fel-  
lowship.  
7:30 p.m.—Evening worship  
service.

**FIRST UNITED  
PRESBYTERIAN CHURCH**  
Unadilla  
The Rev. T. H. Liang  
Every Sunday—  
9:45 a.m.—Sunday school.  
11:00 a.m.—Worship service.  
Every Tuesday—  
8:00 p.m.—Choir practice.

**CHELSEA  
FINANCE CORP.**  
\$25 to \$1,000  
For Any  
Worthwhile Purpose  
See or Call  
**FRANK HILL**  
at 475-8631  
111 PARK STREET  
CHELSEA, MICH.

## LAFF OF THE WEEK



## Tractor Operators' Course Offered Through 4-H Clubs for 14-Year-Olds

Winterize your 14-year-old son and avoid a \$10,000 fine.

"Winterized? I mean send him to a tractor and farm machinery operators' training program," explains Howard Doss, Michigan State University farm mechanization specialist.

"He will learn basic safe operating practices that are good whether he's operating a tractor at home or on unfamiliar ground. Besides the best training available, he will receive an exemption

certificate after completing an approved program. It certifies that he's qualified to operate certain pieces of farm machinery.

"It's this exemption certificate that helps you avoid a \$10,000 fine," Doss says. "A 14-15-year-old must have one in his possession, when working for someone else for pay or for friendship.

Otherwise, the U. S. Department of Labor could ask a federal district court to fine dad up to \$10,000. Your son doesn't need a certificate if he's working for you on your farm."

Doss says approved training programs are available through high school vocational agricultural teachers or in the 4-H tractor operation program. You can find out about them by contacting your high school or your county Co-operative Extension Service office.

The 68-page manual contains child labor regulations concerning hazardous farm occupations, a diagram for the tractor operator skill test and answers to questions on 17 hazardous farm machines.

Or send one dollar to "Training Program Manual" Michigan State University, East Lansing, 48824, for a copy of the vocational agricultural training program.

## CUB SCOUT NEWS

**DEN 1, PACK 415—**  
Den 1 of Cub Scout Pack 415 met Tuesday, Sept. 21 and Thursday, Oct. 7, at the home of the den mother, Mrs. George Atkinson of Cavanaugh Lake.

At the first meeting, we welcomed Gerald Ratzloff to our den. Also present were Kenneth Cobb, Barry Hinz, John Drieman, and Andy Ahrens, who brought treats. John Drieman graduated into Webelos Sept. 28. We will miss his happy, smiling face in our den. On Oct. 7, Michael Bice, Billy Freeman and Todd Sprague joined the troop. The meeting opened with the Cub Scout promise. Kenneth Cobb furnished treats.

The most expensive process in the world is transforming Uranium-238 into Uranium-235.

## Dana Corp. Optimistic About Future

Sales and earnings of Dana Corp. for the fiscal year ended Aug. 31, 1971, were announced today by Chairman John E. Martin.

Sales for the year were \$636,000,000 and profits were \$28,200,000 or \$2.25 per share. This compares with sales for the previous year of \$672,000,000 and profits of \$36,300,000 or \$2.64 per share.

In making the announcement, Martin stated that sales and earnings were down from the previous year due to strikes in the first quarter and the general economic slowdown. However, Dana sales and earnings were on the upward trend during the last two quarters with fourth quarter results at an all-time high for the period.

Sales for the fourth quarter totaled \$171,000,000 compared with \$156,000,000 for the previous year, or 68 cents per share. This compares to the previous year's \$9,000,000 or 66 cents per share.

Results for the year include income from Dana's equity in its affiliated international companies: Albarus in Brazil; Ozeveg, Kiss in Argentina; T. F. Victor in Mexico; and C. A. Danaven in Venezuela. The combined effect of these earnings amounts to \$1,087,000 of net income or 8 cents per share.

Martin stated that all economic indicators for fiscal 1972 show continued strength and growth in the market Dana serves. He placed particular emphasis on the light truck and passenger car segments as well as Dana's increasing penetration in the international and replacement parts markets.

## SUNDAY'S SERMON

★ **Happiness . . .**  
If happiness were for sale, how much could you afford? Would you have to give up something you now have to get the money you need to buy a healthy share?

The question is a foolish one. Happiness cannot be bought, for any price. And few of us like the idea of having to give something up to attain it. Therein lies the problem. We can't seem to get away from the idea that happiness is getting, not giving.

We may set a goal — a new house, a new car, and this becomes a requirement for happiness. Yet, when we reach the goal, we think of something else that is required before we may claim happiness.

## Girl Scouts

**TROOP 47—**  
Junior Girl Scout Troop 47 went on a camp-out Oct. 1 and 2. We cooked our meals over an open fire and slept in tents. On Oct. 6, we had our rededication meeting. We invested seven new girls: Debbie Campbell, Elizabeth Hurst, Lori Spier, Jennie Troyer, Anne Umstead, Beth Wireman, and Venita Scott. Our mothers and fathers came and watched. We had cookies and punch. Ten girls lit candles for the candle ceremony while Karen Blanchard carried the flag, and Joan Weber and Debbie Connell were her color guards. We also got our World Association pins.

Teresa Hoffman, scribe.

## For And About Teenagers



### THIS WEEK'S LETTER:

I'm a 15-year-old girl and I've been going with this guy for almost six months. During this time I've fallen deeply in love with him. He is very nice, and everything that I want him to be. But he's not perfect. When he gets with the guys, he goes wild. With his friends he curses and then he laughs about it because he thinks it's cute. He has never cursed in front of me when we are by ourselves. What should I do to make him quit?

so in the presence of his friends. Tell him, privately, that you think such language is unnecessary, and "kid" stuff. He will get the message. He may stop the practice. If he doesn't, you'll just have to wait until he grows up a bit.

If you have a teen-age problem you want to have discussed or an observation to make, address your letter to "For and About Teen-Agers," Community and Suburban Press Service, in care of this newspaper.

## Dexter United Fund Serves School District

Dexter United Community Chest drive chairman Garry Tilt and his business — professional committee chairman Leonard K. Kitchen, are conducting a special drive this year for payroll deduction gifts from their school district residents wherever these residents work.

"Our fund collection area, the Dexter school district, was designated some years ago at the Lansing headquarters," said Tilt, manager of the Detroit Edison office in Dexter. "And it includes all or part of five townships. Some of our residents live in the Chelsea phone area, some in the Whitmore Lake-Hamburg area, and some in the Ann Arbor section.

"We have always enjoyed co-operation and pleasant relations with the Chelsea fund workers, but it has seemed that a reminder, to people living near any of our school district borders, might help to stress the fact that if they are in our school district the Dexter Community Chest is their fund."

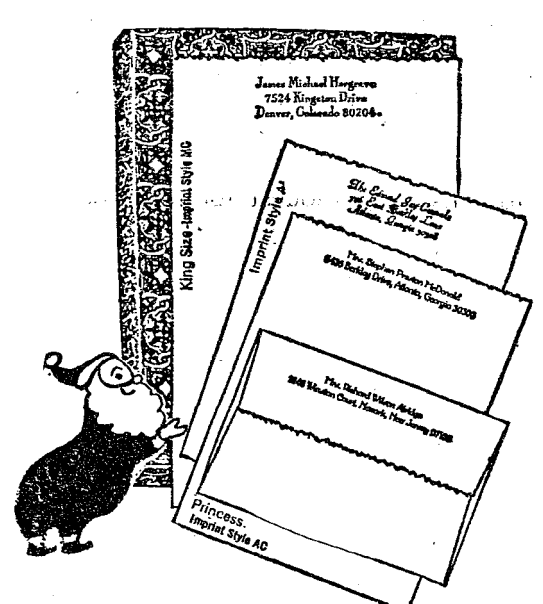
## MSU Will Operate New UHF Channel

East Lansing — Thanks to a \$420,000 federal grant, Michigan State University plans to activate a full-time UHF educational television channel.

The operation of UHF Channel 23 by MSU's television station, WMSB, will serve more than two million persons within the 89-mile radius of its transmitting facility in Okemos.

MSU's present "shared-time" arrangement with WLX-TV, under which WMSB broadcasts 38 hours per week on VHF Channel 10, will be dissolved.

## The Chelsea Standard



## Pre-Christmas Gift Sale

Rytex Deckle Edge Vellum  
Personalized Stationery

Save 50% **\$4.95** (regularly \$9.90)

150 Princess sheets & 100 envelopes . . . or  
100 King size sheets & 100 envelopes

This way you can give a lot of goodness — it's high quality paper; a lot of style; a lot of usefulness. But most of all you give a gift that says, "I had just you in mind." Because Rytex is custom-made for the individual. Makes an ideal gift for men or women — don't forget the men on your list!

Marvelously deckled paper in white, blue, or grey. Smartly imprinted in blue or grey ink in choice of imprint styles shown. Princess or King size sheets—the choice is yours. You can't go wrong. Because any Rytex Personalized stationery style you choose is correct.

### Beautifully Gift Boxed.

MAIL ORDER COUPON

**THE CHELSEA STANDARD**  
CHELSEA MICH. 48118

DECKLE EDGE VELLUM—boxes at sale price of \$4.95 per box.  
**SPECIAL BONUS**—(check) include 50 matching, unprinted, sheets for only \$1.00 more....

**CHECK** ☐ Princess White (9400) ☐ King White (9100)  
**YOUR** ☐ Princess Blue (9450) ☐ King Blue (9150)  
**CHOICE** ☐ Princess Grey (9460) ☐ King Grey (9160)

Ink: ☐ Grey Ink ☐ Blue Ink ☐ Imprint MC ☐ Imprint AL ☐ Imprint AR

Imprint Name \_\_\_\_\_

Street \_\_\_\_\_

City \_\_\_\_\_ State \_\_\_\_\_ Zip \_\_\_\_\_

Ordered by: \_\_\_\_\_

City \_\_\_\_\_ State \_\_\_\_\_ Zip \_\_\_\_\_

Street \_\_\_\_\_

☐ Charge ☐ Payment enclosed. (Sorry, No C.O.D.'s)  
Please include Sales Tax.

## Somebody Cares!

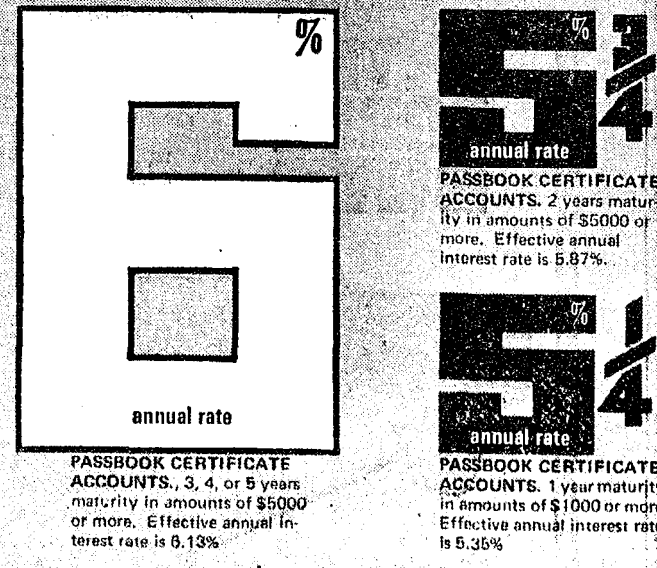
Cares if you are new in town and feel kind of lost; if you've just added a new son or daughter to your family; if HE has finally asked you to become his wife; if you or someone in your family is celebrating a very special occasion . . .

## Who?



PHONE 426-8897

## Get the saver's edge at the FED



Interest is computed daily.

## ANN ARBOR FEDERAL SAVINGS

the savings and loan specialists

Liberty at Division, West Stadium at Pauline,  
Huron Parkway at Hall, Plymouth at Nixon





**WINNING REPORT:** Four directors of the Washtenaw County Conservation District (SCD) display the award and a copy of the annual report. From left: William Nixon, Dexter, Bristle, Manchester, chairman; and Orrin Girbach, Saline, treasurer. Not present is Archie Bradbury of Dexter, the fifth board member. The Washtenaw County SCD annual report contains conservation highlights that have taken place during the year and the progress of conservation work in the county to date.

Bristle, Manchester, chairman; and Orrin Girbach, Saline, treasurer. Not present is Archie Bradbury of Dexter, the fifth board member. The Washtenaw County SCD annual report contains conservation highlights that have taken place during the year and the progress of conservation work in the county to date.

## SCHOOL LUNCH MENU

Week of Oct. 18-22  
Monday, Oct. 18—Varsity Burgers, slice of cheese, corn, cake, apples, milk.  
Tuesday, Oct. 19—Hot Beef Sandwich, mashed potatoes, brown rice, green beans, dish of fruit, milk.  
Wednesday, Oct. 20—Good made chili, crackers, Waldorf salad, bread and butter, berry shortcake, milk.  
Thursday, Oct. 21—Submarine Sandwich, tangy sauce, mixed vegetables, potato sticks, rice pudding, milk.  
Friday, Oct. 22—Homecoming Special: Bulldog burger, Viking potatoes, blue and gold vegetables, fry bar, A-winner fudgesicle.

## Information Meet Tonight Will Explain YFU Program

Do you want to know how your teen could spend next summer abroad? Would you like to host a foreign exchange student for a year or six months?

Then you should attend the information meeting about the Youth for Understanding, teen-age exchange program which will be held tonight, Thursday, Oct. 14 at 8 p.m. in the Chelsea Methodist church, 128 Park St.

Miss Joanne Fisher, daughter of Dr. and Mrs. Joseph V. Fisher, a former participant in the YFU program, will tell about her ex-

periences as a foreign-exchange student.

Several international students now living in Dexter will also attend the meeting, which will be conducted by Mrs. Ellen Brubaker, YFU southeastern Michigan area representative, Mrs. Barbara Parker, Dexter YFU committee chairman, and Mrs. Mary Pratt, community consultant for YFU.

In 20 years, Youth for Understanding, the nation's largest international teen-age exchange program, has grown from a small organization handling 20 to 30 students, all from Germany for the first six years, to a really international program involving more than 6,000 students a year from more than 40 different countries. Each of these students requires a family to live with here in the U. S. or abroad.

Youth for Understanding is one of four State Department supported exchange programs and stresses the importance of actual cultural contact—the day-by-day living with a family. It is in such an atmosphere that young people will learn most about a country, its people, their way of life—and it has proven the best way to learn the language, because it involves actual living and not the sterility of classroom recitation.

The exchange works both ways! U. S. young people also live abroad. Remarkably many of these homes are in countries where United States' prestige has been recently in question. American students may live in South America, the Philippines, Mexico, several European countries, and in Japan.

All of Youth for Understanding's overseas arrangements are made by well qualified national committees. All placements are made only after personal interviews by YFU field workers who both compile and have access to individual files which allow them to match students to host families.

Mrs. Rachel Andersen, executive director of Youth for Understanding

since its inception, has said the chief purpose of Youth for Understanding is to promote international understanding through "an inter-faith, inter-racial approach to international good will by providing qualified young people with broad experience through living with families of other countries."

There are five regular Youth for Understanding programs; foreign students living with United States families for a year or six months; United States students abroad for two months in the summer; Thirteenth Year Abroad for U. S. students; the Youth for Understanding Chorale, String Ensemble, and Wind Ensemble which tour for six weeks in the summer; and the exchange of junior high school students with Mexico for six weeks in the summer.

More recently, Youth for Understanding has been working on new programs to increase exchange of students from Ghana, Liberia, and Yugoslavia, and to open up possibilities for qualified United States students in inner-city areas.

Youth for Understanding co-operates with churches, schools and community groups both here and abroad to achieve its goals. As Mrs. Andersen emphasizes about the program, "... by taking part in a living experience abroad, a person is able to look at a country from the inside out and not merely as an observer."

A recent exchange student said of the family living experience: "Caring and being concerned is the key to being a good exchange student. If you and your foreign family care enough to try to understand, then your experience of living in a different country can be the most exciting and meaningful happening in your life." As for the exchange itself, and its effects on an individual's awareness of the world, another student observed, "I used to think of a country in terms of its outstanding cities, wars, monuments, history ... Now I think of it in terms of its people. That is what really matters, isn't it?"

## College Representatives Scheduled To Visit High School Next Week

Schools participating in Chelsea High school's visitation program during the next week are as follows:

University of Michigan College of Pharmacy, 11 a.m. Friday, Oct. 15.  
Michigan State University, 9:15 a.m. Wednesday, Oct. 20.  
Grand Valley State College, 10:10 a.m., Wednesday, Oct. 20.  
Alma College, 2 p.m. Friday, Oct. 22.

The high school counselors report that student interest and attendance at the meetings with college representatives has been excellent thus far this year.

## YES

WE ARE MAKING  
LONG-TERM FARM  
REAL ESTATE  
LOANS

SEE US

Federal  
LAND BANK  
Association

P. O. Box 1006  
Ph. 769-2411 8645 Jackson Rd.  
Ann Arbor, Mich. 48103

## District Court Proceedings

In 14th District Court this week Stanley Anderson, Warren, was sentenced to a \$150 fine or 30 days in jail for impaired driving.

Manith Armstrong, Manchester, was sentenced to 21 days in jail, with credit for time spent, and \$50 fine for assault and battery.

Samuel Cawthorn, Detroit, was found guilty of impaired driving. He will be sentenced Nov. 15 in Chelsea.

Steven Edwards, Dexter, was sentenced to \$50 fine or 10 days in jail for joy riding.

Larry Ellerholz, Taylor, was sentenced to \$100 fine or 30 days in jail for illegal use of marijuana.

Edward Fowlkes, Detroit, was found guilty of being drunk and disorderly and was ordered to pay \$35 fine and costs or spend five days in jail.

Walter A. Page, Dexter, was sentenced to one year probation and a \$100 fine for driving under the influence of liquor.

Genie Plamondon, Ann Arbor, was bound over to Circuit Court on a charge of possession of marijuana. She will appear in Circuit Court on Oct. 22.

George D. Stark, Saline, was sentenced to one and one-half years probation, and ordered to pay \$100 fine and costs for driving under the influence of liquor. He was also referred to the alcohol safety program.

Rodney Waldron, Stockbridge, was ordered to pay \$100 fine and costs or spend 30 days in jail when sentenced for driving under the influence of liquor.

Eugene Kikittin, Wayne, was ordered to pay \$21 fine and costs or spend 10 days in jail for driving on a suspended license. He was also ordered to pay \$75 fine and costs for driving under the influence of liquor. A 30-day jail sentence for the second charge was suspended.

Edward Neal, Grayling, pled guilty to being drunk in a public place, and was ordered to pay \$50 fine and costs within 24 hours.

Douglas Warman, Ypsilanti, pled guilty to a charge of careless driving. He was ordered to pay \$35 fine and costs.

Donnie Buckley, Ann Arbor, pled guilty to speeding 70 mph in a 55 mph speed zone. He was ordered to pay \$21 fine and costs.

Beverly J. Brookhart, Ypsilanti, pled guilty to larceny under \$100. David Hook, Westland, pled guilty to fishing without a license. He was ordered to pay \$8 court costs.



**A HELPING HAND:** Chelsea United Methodist Home volunteer worker Mrs. Bert Pearson, helps the Rev. Robert Bryce, a resident of the home, out of a car following a short sight-seeing trip through the area. Volunteers take residents of the hospital unit of the home for short drives every Monday afternoon in good weather.

## Dr. Fisher Attends AAGP Conference In Miami Beach

Dr. Joseph V. Fisher, president of the Michigan Chapter of the American Academy of General Practice, attended the 23rd annual Scientific Assembly of the American Academy of General Practice in Miami Beach, Fla. The four-day conference ended Thursday, Oct. 7.

The assembly featured 16 nationally-known speakers, 23 clinical seminars, 90 scientific and 250 technical displays.

Topics covered in the session were the psychology of dying, endocrine deficiencies, population control, early surgery in knee injuries and surgical repair and replacement of the heart.

The American Academy of General Practice, headquartered in Kansas City, Mo., is the nation's second largest medical association, and the only national medical organization that requires its more than 31,000 members to keep "going back to school."

All AAGP members must complete 150 hours of postgraduate study every three years.

## Methodist Home Plans Meeting For Prospective Volunteers

A meeting for present and prospective volunteers at the Chelsea United Methodist Home will be held Oct. 21 at 10 a.m. in the recreation room in the Home's "M" building to discuss the fall and winter volunteer program.

According to Mrs. Evelyn Panone, volunteer co-ordinator at the home, there is a great need for volunteers, especially those who can come on a regular basis. "Volunteers may work any day, any number of hours," Mrs. Panone said.

Currently volunteers work mostly with patients in the hospital unit. They do escort duty, read to the residents, write letters, sew, help with arts and crafts, as well as simply provide companionship to the Home's residents. "We're trying to get people to work with the patients individually," Mrs. Panone added.

Anyone interested in the volunteer program not able to attend next Thursday's meeting may contact Mrs. Panone at the Chelsea Methodist Home.

The leading cause of fires statistically is cigarettes and matches. About 150,500 U. S. building fires a year result from their improper use and disposal. People cause most of the 2,475,000 fires annually, through carelessness, negligence and ignorance.

## Notice of PUBLIC HEARING

A public hearing will be held Tuesday, November 2, 1971 at 8:00 p.m. in the Chelsea Village Council Chambers, 104 East Middle Street to consider a request for rezoning of the following described property from R-2 Residential to Transitional Residential-Office District:

Lot 2, Block 16 of Elisha Congdon's Third Addition.

This parcel is located at the north-east quadrant of South Main and East Summit Streets.

## VILLAGE OF CHELSEA

RICHARD HARVEY, CLERK

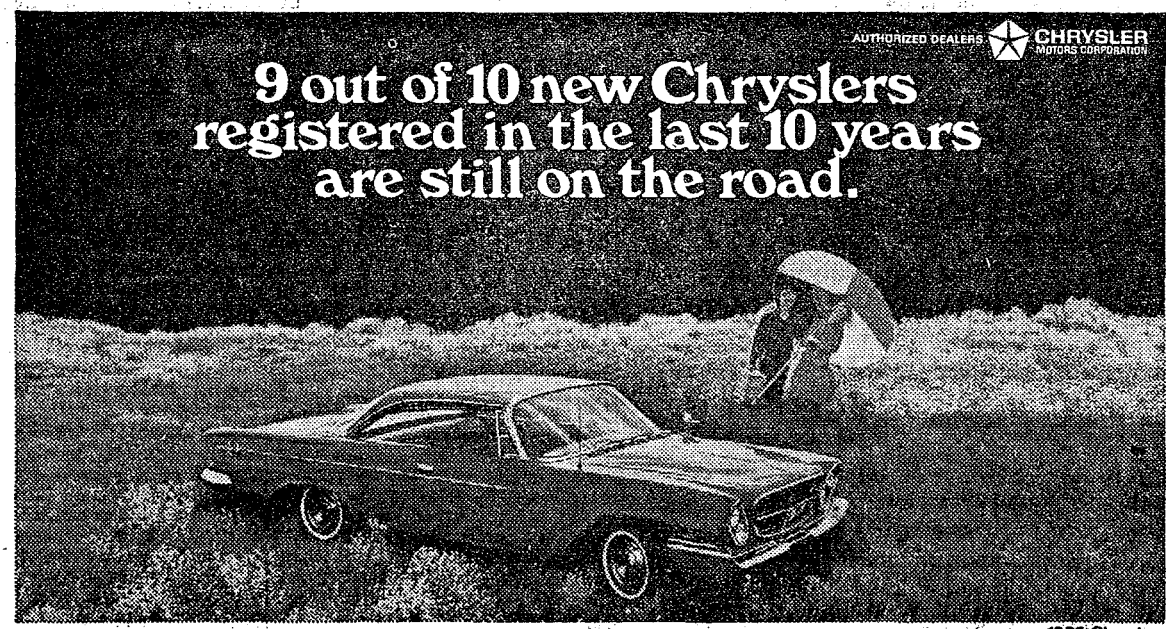


INVITATIONS or  
ANNOUNCEMENTS...

Let us provide you with the very finest printed or engraved invitations and announcements. Make certain that your wedding stationery is of top quality and conforms to correct social requirements. We can advise you on these important details.

THE CHELSEA STANDARD

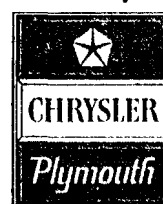
Commercial Printing Department



That should tell you a lot about the cars we sell.

Whether you own a big or small car, pay a little or a lot, the one thing you don't need from a car is trouble. You want a car that will hold up. A car that's built to last.

Well, we're with you. Just look at this figure: **9 out of 10 new Chryslers registered in the last 10 years are still on the road.** This includes all the various owners, any kind of terrain, and numbers of miles. But every Chrysler is designed and built the way you want it—to last. So even if you won't be keeping a car for years and years, it's good to know you've got all that quality going for you in your first year as well as in later years.



CIDAA

Newport Royal 2-Door Hardtop

You gotta have heart.

The quality of a Chrysler starts deep down in the heart of the car. That's where you've gotta have it. That's where you get it. With such time- and road-proven features as Chrysler's torsion-bar suspension and Torque-Flite automatic transmission. The rigid strength of unibody construction. And a 7-step dip-and-spray anti-rust process. Extra care like that is why so many Chryslers stay in great shape.

Every Chrysler Imperial is road-tested at the factory.

If our cars aren't right, we don't want you to have them. For example, every Imperial is put through a road test at the factory that includes over 100 different checks before it reaches you.

This year every Chrysler car offers a new optional electronic ignition system that does away with the points and condenser that can wear out. This helps keep the engine tuned longer. And a tuned engine means cleaner exhaust. From our lowest-priced Chrysler Royal to our big, luxurious Imperial, Chrysler cars are built to last. The same is true of every Chrysler-engineered car we sell—Valiant, Duster, Cricket, Satellite and Fury.

We think that's the kind of car America wants. That's the kind of car we'd like to show you. Come see us today.

Coming through with the kind of car America wants.

G. A. SALES & SERVICE · 1185 Manchester Road



## County Farm Bureau Blasts Proposed Park

Members of Washtenaw County Farm Bureau passed a strong resolution opposing the proposed Mill Creek park at their annual meeting held last Wednesday night at the Farm Council Grounds. Approximately 300 people were present for the annual meeting.

The resolution opposing the park contained the following objections to it:

1) Practically one fourth of the agricultural land in Lima township, one of the top livestock producing areas in the state, would be lost to farm production.

2) An enormous tax base would be removed within one township, and one school district would inherit the loss.

3) About 88 families would be displaced, thus multiplying the inflationary economic urbanization already mushrooming in the county.

4) There has been no consultation with township planning commissions to co-ordinate orderly future land use efforts.

5) The relocation and closing of some roads within the proposed area would burden residents remaining in the area with the necessity of driving extra miles to get around the park.

6) The transition from agricultural to recreational urbanization would be highly detrimental to the wildlife in the area.

7) Proof of need should be made prior to the acquisition of the properties involved.

The resolution concluded: "We suggest that further consideration be given to developing large holdings of land already acquired by the park authority and lands owned by the state. Agriculture should have a representative on the Board of Commissioners."

The Farm Bureau also passed resolutions pledging members' willingness to participate and support the restoration and maintenance of the environment, their opposition to the Family Assistance

Program, the guaranteed annual income and the negative income tax. They favored an increase in income tax to support school operating costs if property tax millage were limited to building bond issues only; opposed the no-fault insurance concept until it has been further tested; supported a State Agriculture Labor Relations Act to protect both farmers and farm labor; supported a resolution stating that land used only for farming should be taxed realistically for that use until it is sold for another purpose; recommended legislation which would outline a procedure to apply when public facilities or rights-of-way are requested.

The group also opposed the President's proposed revenue sharing plan, Federal Health Insurance, and the consolidation of school districts and/or attendance boundaries which result in inter-district bus transportation of students by any means other than a vote of the people affected.

The resolutions passed by the Washtenaw County Farm Bureau will be presented at the State Farm Bureau meeting set for Nov. 8-10 in Grand Rapids.

Area delegates and alternates to the conference are: John Tandy, delegate, and Norwin Lesser, alternate, Dexter township. Dale Weidmayer and Dennis Englebert, delegates, Neil Stierle, David Wolfgang and Alton Horning, alternates, Freedom township. Harold Sias, delegate, Lima township. Ellery Rouser, delegate, Sharon.

Also re-elected to the Farm Bureau's board of directors for three years was Malcolm Reinhardt, representing Sylvan and Lyndon townships. Dennis Englebert of Freedom township was elected as a director-at-large.

Jana Kress, Scott Eisele and William Pfau, all from the Manchester area, were presented with merit certificates for participating in the citizenship program.

## Gridders of the Week



LARRY JONES (24), a senior guard, broke an ankle in a practice session prior to the Dexter game, and has been out of action ever since. While recovering from the broken ankle, Larry also had an operation on his nose, needed to repair damage caused by some not-so-gentle persuasion by a wrestling opponent last year. Larry's cast comes off Friday, the nose is healing, and he thinks he may be back in the line-up when Chelsea meets South Lyon, Oct. 29. A varsity wrestler since his freshman year, his "main sport," Larry is co-captain of the wrestling team. He's a Varsity Club member, a Senior class representative on the Student Council, a National Honor Society member, an Annual staffer, and also involved in forensics. He plans to be an architect, and is thinking about going to the U. of M. since they have a good architecture program and a good wrestling team. He has one sister, Terri, and is the son of Mr. and Mrs. Errol Jones, 6051 Sibley Rd.

MARK COLLINS (24), a 5'10", 165-lb. half-back has played football for six years, and is this year's candidate for hard luck player of the season. Mark dislocated his shoulder during the second week of practice but recovered just in time to start in the opening game against Stockbridge. Then, during the first minutes of the game—on his first carry of the season—Mark got hit hard, and his elbow was dislocated. Initially, it looked like he might be out of action for the rest of the season, but now he thinks he'll be back in action for the Lincoln game on Oct. 8. He has also been a member of the track team for six years, and specializes in the long jump. Mark is a member of the varsity club, and a water skier. He has four brothers, Tommy, Ron, Chris and John, and lives with his mother, Mrs. Dorothy Collins, at 237 Railroad St.

## Debaters Fare Well In Large Tourney

Senior varsity debater Chick Lane won the outstanding affirmative speaker trophy, and seven Chelsea High school debate teams entered in three divisions of competition compiled a 19 win-nine loss record in one of the largest debate tournaments of the year last Saturday.

Approximately 60 Michigan high schools participated in the all-day tournament held at Taylor Kennedy High school. According to debate coach William Coelius, the Chelsea debaters turned in "a very good performance."

The "A" division of the tournament featured "switch-side, power-match" debates. In that type of competition, each school enters one team of two debaters who must debate both the affirmative and negative sides of the debate proposition. After each debate, winning teams are matched with other winners, and the losing teams are paired with other losing teams.

Dan Gaunt and Mike Hergert, both varsity debaters, ended the day with a two-win, two-loss record.

Chelsea Rod & Gun Club TRAP SHOOT 7103 Lingane Rd.

Open Every Sunday 10 a.m. to 2 p.m. Until Hunting Season Opens

Various prizes up to \$10 Value for top scorers.

## North Sharon Church Hosts Conference

North Sharon Bible church, 17999 Washburne Rd., will hold a fall missionary conference at 7 p.m. Oct. 17 through Oct. 20.

Missionaries from Independent Gospel Missions (IGM) of New Castle, Pa., will take part in the conference. IGM has missionaries serving around the world, as well as home missionaries.

During the conference, all IGM missionaries will take part in each service. There will be displays and curios from around the world, and slide presentations.

The director of IGM, D. L. Board, will also be present for the conference.

IGM is a fundamental mission board which takes a strong stand against worldliness and apostasy. All people in the area are welcome to participate in the conference. A complete nursery service will be provided each night.

## Among Winners in Horse Schooling Show

Laura Rademacher, 200 Freer Rd., Tommy Donkin, 675 Cavanaugh Lake Rd., and Kathy Spencer, 4580 Farrell Rd., won honors at the Majestic Farm Fall Open Schooling Show last Sunday.

More than 330 entries in 35 events were judged during the show.

Laura, riding "P.J." was the top winner in Beginners Equitation. Tommy, on "Ibn Asal" was the first-place winner in Leadline competition, and Kathy, riding "Ojibway," was the top winner in Advanced Bareback Equitation.

## Teachers Honored for Service to Profession

The first annual Service Honors Banquet, an event recognizing Chelsea teachers and administrators with 10 or more years of service in the field of education, held last Saturday night was "a tremendous success," according to Ed Lauhon, president of the Chelsea Education Association.

## Scholastic Aptitude Test Scheduled

The first combined Preliminary Scholastic Aptitude test and National Merit Scholarship Qualifying test (PSAT-NMSQT) will be administered to college bound high school juniors Tuesday, Oct. 19 at Chelsea High school.

Registration for the combined examinations began Monday, Oct. 11, and will close Monday, Oct. 20. Students may register for the combined tests at the desk in the high school main office by paying the \$2.50 test fee.

At the time they register, George Bergman, high school counselor, said, students should pick up one of the blue-colored test bulletins. The bulletins contain general information about the tests, and also sample problems similar to those on the actual test.

It is important for any junior ed educational training, to take thinking about college, or advancement. The test not only screens out the combined tests, Bergman said, competitors for National Merit Scholarships, but also gives experience with the type of questions and problems used on the Scholastic Aptitude Test (SAT)—one of the two national college admissions tests required by most colleges and universities.

The test, which will begin with the first class period and will last approximately three hours, is comprised of three sections. The first section, testing verbal ability, is comprised of four types of questions dealing with antonyms, sentence completions, analogies, and reading comprehension.

The reading comprehension section tests a student's ability to understand prose excerpts taken from various fields such as history, music, social science, biological science, philosophy and others.

The third section deals with mathematics, and requires a student to apply graphic, spatial, numerical, symbolic, and logical techniques to problem solving situations.

## Ronnie Howard Injured in Crash On Werkner Rd.

Ronnie Howard, 25, 133½ W. Middle, was taken to St. Joseph Mercy Hospital in Ann Arbor after the car he was driving veered off Werkner Rd. near Island Lake Rd., and overturned Sunday, Oct. 10, at 8:35 a.m.

Howard, alone in the car, was southbound on Werkner. He apparently lost control of the car while rounding a curve. He went off the right shoulder of the road and traveled 125 feet along the roadway, skidded back on the road and slid 54 feet, then flipped through the air another 62 feet.

The car landed upside down 45 feet from the east side of the road in a field owned by Laurence Noah, 8825 Werkner Rd. Approximately 50 feet of Noah's wire fence was torn down when Howard's car left the road.

Howard was treated for severe lacerations on his back and forehead.

The accident was investigated for the Washtenaw County Sheriff's Department by Deputy Jerry Ringe, a part-time officer for the Chelsea Police Department.

Those honored, and their years of service are: Iris Papsdorf, 36; Isabel Eisele (ret.), 36; Superintendent of Schools Charles Cameron, 35; Arthur Schmunk, 31; Lucille Grossman (ret.), 25; Olive Rogers (ret.), 31; Creta Winkel, 26; George Prinzing, 25; Charles Lane, 23.

Lyman Johnston, 22; Sylvester Wojcik, 22; Janet Fuks, 20; Florence Hakala, 20; Vivian Michelson, 20; Margaret Senne, 20; Dorothy Thodeson, 20; Mary K. Weber, 20; Alan Conklin, 19; Paul Simon, 19; Patrick Wade, 19.

George Marshall, 17; George Bergman, 16; Warren Mayer, 15; Robert Benedict, 13; James Hoffmeyer, 13; Alfred Smith, 13; Donald Young, 13; Richard Bareis, 12; James Hoeft, 12; Thomas Morrison, 12; Philip Bareis, 11; Margaret Nance, 11.

Helen Bareis, 10; Charles Kelly, 10; Anne Morgan, 10; Bernice Packard, 10; Katherine Reddeman, 10; JoAnn Thornton, 10; and Orville Tompkins, 10.

Featured entertainers at the banquet, held at the Chelsea Rod & Gun Club, were Diane L'Roy and Bruce Galbraith who played guitar and string bass and sang duets.

Following the entertainment were speeches by Superintendent of Schools Charles Cameron and Board of Education President William Storey. Cameron recalled

personal experiences — many of them humorous — he had with students, teachers, parents and administrators, during his career.

Storey recalled the life-long influence two teachers in his small, southern Indiana high school had on him. Storey said that he had never gone back to thank those teachers, and that now, he would thank all the Chelsea teachers instead.

A dance followed the awards presentation.

Lauhon said that he hopes the Service Honors Banquet will become an annual event.

## Stolen Cadillac from Detroit Found Here

Chelsea Police recovered a stolen 1970 Cadillac Fleetwood belonging to Dawson Carbide, Inc., of East Detroit, Thursday, Oct. 7.

The car was found by Huston M. Hardy, 17, 19750 Old US-12 West, on Silver Fox Dr., about two-tenths of a mile north of Old US-12.

Chelsea police initially received a report stating that the car was not listed as stolen. But later corrected reports noted that the car, found unlocked and without license plates or registration, had been missing since Feb. 8.

The car was turned over to the Washtenaw County Sheriff's Department.

## The Chelsea Standard



## Pre-Christmas Sale

### RYTEX ANTIQUE VELLUM:

Just in time for Christmas buying... luxurious vellum paper with the subtle laid-mark pattern. Paper colors in soft white or pale blue. Name and address, or monogram, printed in blue, dark grey or raspberry red. Handsomely gift boxed.

Man-sized Monarch: 100 sheets & 100 envelopes \$4.95  
or Princess-size: 150 sheets & 100 envelopes (a \$9.90 value)  
or Gracious Semi-notes: 100 notes & 100 envelopes

EMBASSY INFORMALS Always correct for invitations, brief lines, thank-you notes. Raised printing in jet black ink on white, invitation-weight notes. 100 Informals & envelopes \$5.00 (double quantity only \$2.50 more)

MAIL ORDER COUPON

THE CHELSEA STANDARD  
CHELSEA, MICH. 48118

ANTIQU VELLUM: boxes at \$4.95 (check choices below)  
INCLUDE BONUS: ☐ (check) 50 extra, unprinted sheets at \$1.00 with order.

Princess Size ☐ White (3500) ☐ Blue (3550)  
Monarch Size ☐ White (3600) ☐ Blue (3660)  
Semi-Note ☐ White (N3500) ☐ Blue (N3550)  
Ink Color ☐ Blue ☐ Grey ☐ Red  
Imprint Style ☐ MC ☐ AL ☐ Monogram on sheets & address on envs. (this is \$1.00 extra)

Imprint Name \_\_\_\_\_  
(or monogram) \_\_\_\_\_  
Street \_\_\_\_\_  
City, State, Zip \_\_\_\_\_

EMBASSY INFORMALS: boxes (check choice below)  
☐ Regular Qty. at \$5.00 (800SR) ☐ DOUBLE QTY. at \$7.50 (8000SR)

Imprint Name \_\_\_\_\_  
Street \_\_\_\_\_ Apt. \_\_\_\_\_  
City, State, Zip \_\_\_\_\_  
Account No. \_\_\_\_\_ Phone \_\_\_\_\_  
☐ Charge ☐ Check or M.O. enclosed \$ \_\_\_\_\_  
Sorry no C.O.D.'s. (Please include Sales Tax.)

## NOW READY

GRAIN MARKETING, DRYING AND STORAGE ARE NOW AVAILABLE AT HONEGGER'S, CHELSEA, MICH.,

WITH FULL BONDED PROTECTION

TO PATRONS

## Honegger's & Co., Inc.

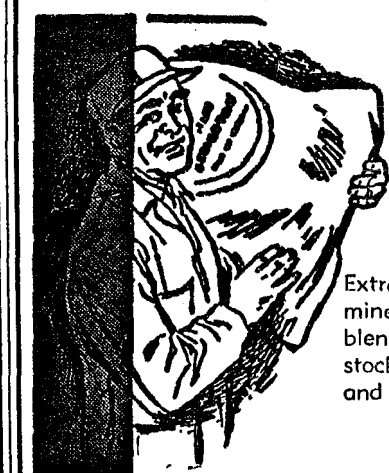
11800 Dexter-Chelsea Rd.

Chelsea, Mich.

Phone (313) 475-3611

## YOU'LL PROFIT FROM BETTER FEEDS

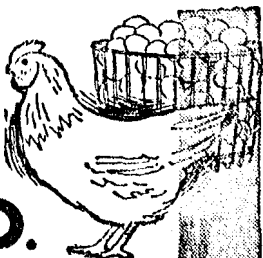
Extra proteins, vitamins and minerals are scientifically blended to promote your stock's growth and health, and to boost your profits.



Complete feeding rations for all your livestock, poultry.

## FARMERS' SUPPLY CO.

PHONE GR 5-5511



## Take off!

Undecided about your future? It's no disgrace. Even Einstein couldn't make up his mind for quite awhile.

Van Gogh took time to get on track. The Wright Brothers didn't start concentrating on airplanes right away.

So, if you're graduating from college and you still don't know what to do with your future... chin up.

You can go to Officer Training School. Become an officer. Get officer's pay and prestige. Travel. All while you're learning to fly.

You can do something constructive, exciting, profitable and patriotic. Be an Air Force pilot.

They'll say you're just another genius who has made up his mind.

Contact your local Air Force Recruiter.

Contact Sgt. Struble or Sgt. McDonald at 110 E. Washington, Ann Arbor Phone 662-1463





Mrs. Douglas Ray Schoenberg.

## Rebecca Smith, D. R. Schoenberg Wed in Saturday Ceremony

Ann Smith became the Douglas Ray Schoenberg Oct. 9, in an evening ceremony performed in Salem Luth. church, Ann Arbor, with Jim Huebner of Faith church, Dexter, officiating.

Rebecca is the daughter of Mr. Robert T. Smith, 13735 Douglas, is the son of Mrs. Donald R. Schoenberg, 380 Jerusalem Rd.

The wedding ceremony was a traditional one, with a processional, hymns, and a reading. The bride wore a white gown with a full skirt and long sleeves. The groom wore a dark suit. The ceremony was held at 7 p.m.

The bride's bouquet consisted of white chrysanthemums, and the bridesmaids carried bouquets of white chrysanthemums. The wedding was held at the home of the bride's parents.

The bride's father, Mr. Robert T. Smith, is a member of the Salem Luth. church. The groom's father, Mr. Donald R. Schoenberg, is a member of the Faith church.

The wedding was attended by family and friends. The reception was held at the home of the bride's parents.

**VILLAGE BEAUTY SALON**  
LORETTA - CINDY - EULA  
MARGE - ARLENE - SARAH  
107 N. MAIN PHONE 475-5421  
**OPEN MONDAY THRU SATURDAY**  
Evenings By Appointment

**Memorable Portraits**  
in  
**Natural Color**

There is no obligation to buy additional portraits; however, extra prints are available in sizes up to 16x20", at reasonable prices.

Quality Portraits are Guaranteed

Age limit three weeks to twelve years. One per family. Groups at \$1.00 per additional subject.

No Appointment is Necessary.

**5x7 Portrait 38¢**  
Fri., Oct. 15 9 a.m. to 5:30 p.m.  
and  
Sat., Oct. 16 9 a.m. to 5:30 p.m.  
Plus 50¢ Handling and Delivery

**Dancer's Dept. Store**  
Chelsea

## Club and Social Activities

### MODERN MOTHERS

Modern Mothers held a brief business meeting at the home of Mrs. Charles Mattoff Tuesday, Oct. 12.

Troopers Roger Bittell and Roy Periloux of the Ypsilanti Post of the Michigan State Police presented a program on breakings and enterings in the private home.

Two guests, Mrs. James Grau and Mrs. Laurance Noah, were introduced.

Speakers for the evening were two members of the Ann Arbor chapter of Alcoholics Anonymous.

Refreshments were served by hostesses Mrs. Thomas Elisele and Mrs. Arden Musbach.

The next meeting will be Husband's Night, Oct. 26, 8:30 p.m. at the Chelsea Rod and Gun Club.

### LYNDON FARM BUREAU

Lyndon Farm Bureau discussion group met at Lyndon Town Hall Oct. 9 with 18 present for a pot-luck supper.

William Hogan called the meeting to order at 8 p.m. The Carl Schoonovers reported on the Washtenaw county air tour. All other literature was discussed at the meeting.

The next meeting will be held Nov. 13 at the Town Hall. A pot-luck supper begins at 7 p.m.

### WOMAN'S CLUB

Woman's Club of Chelsea met Tuesday, Oct. 12 in the club room of the McKune Memorial Library.

Nineteen members and one guest were present.

Following the business meeting Mrs. Robert Koch introduced Dave Bacon, president of the Mill Creek Research Council who spoke on the Huron-Clinton Metropolitan Park Research Council, who spoke on the farm lands and homesites in the area involved in the park development planning.

The talk was followed by a question and stimulating discussion period. Hostesses were Mrs. Dwight Gadbey and Mrs. LeRoy Hoffman.

A trip to Frankenmuth, Oct. 30 will be the next activity. The next regular meeting will be held in the club room at the Library Nov. 9 when the program subject will be "Future Shock."

The ceremony at the Stockbridge, American Legion Hall. Mrs. Clarence Reynolds, of Saline, an aunt of the bride, served the wedding cake.

Mrs. Donald Fietag of Rantoul, Ill., poured punch, Mrs. Leonard Burrell poured coffee, Miss Mary Kay Gaken served the bridegroom's cake, and Miss Dawn Reynolds of Saline, attended the guest book.

Upon their return from a week-long wedding trip to South Dakota the new Mr. and Mrs. Schoenberg will make their home at 148 Van Buren St., Chelsea.

The bride is a graduate of Chelsea High school and is employed by Dr. C. F. Krause and Dr. J. V. Fisher.

The bridegroom is a 1970 graduate of Chelsea High school. He attended Michigan State University and is now employed by Ann Arbor Federal Savings & Loan.

## Otto Luchts Observe 50th Anniversary

Mr. and Mrs. Otto W. Lucht celebrated their 50th wedding anniversary Oct. 8. They were married in Chelsea, Oct. 8, 1921 in the home of Mr. and Mrs. Adam Faust.

Mrs. Robert Gillette of Jackson held a family reception for her parents Sunday, Oct. 10 in their Four Mile Lake home.

Mrs. Lucht is the former Esther Faust. The Luchts have two grandsons.

## Rebekah Lodge Will Vote Oct. 19 on Changing Meeting Day

Chelsea Rebekah Lodge No. 183 met Tuesday, Oct. 5 at the Rebekah hall. Mrs. Clifford Wolfe and Mrs. Evelyn Hale were the committee for the evening.

A vote on the proposed change of meeting nights will be taken at the Oct. 19 meeting.

The permanent metal social security card sale will be terminated after the next meeting. All names and social security numbers are to be turned in to the secretary.

Members approved a cash donation to the Community Chest.

Mrs. Hale won the basket of flowers donated by Mrs. Wolfe.

All old eye glasses collected by the Rebekahs are to be given to Mrs. Geno Coltre or Mrs. Richard Keeler. All area residents are invited to participate in the project.

A district visitation was held in Vandercook Lake on Oct. 13. The last district visitation will be to Martha No. 2 in Jackson on Oct. 24.

A birthday card shower for Mrs. Lulu Sweeny, now a resident of Florida, was held on Oct. 9. Other Burnette, Loydell Keezer, Marion Burnette, Loydell Keezer, Marion Pickell, Hazel Dvorak, Edith Kealy, Donna Feldkamp and Clare Johnson.

Mrs. Coltre and Mrs. Packard will attend the Michigan Rebekah Assembly in Grand Rapids, Oct. 18 through 20 with Mrs. William Devlin and Mrs. Thornton of Harmony Lodge, Dexter.

PNG Club will meet at the home of Mrs. Steve Slane, today, Oct. 14, at 7:30 p.m.

The candlelight prayer was said by the chaplain for all members and servicemen.

## VFW Auxiliary Gives Flag to Girl Scout Troop

The regular business meeting of VFW Auxiliary Post No. 4076 was held Monday, Oct. 11 in the Rebekah Hall. Mrs. Lila Bohenna was initiated into membership in the Auxiliary at the meeting.

Americanism Chairman Eulalie Packard reported that a flag had been presented to the new Girl Scout Troop 47, Sept. 29.

Mrs. Fred Klink, Sr., Mrs. Kenneth Platt, Mrs. Frank Kniss, Mrs. Mac Packard and Mrs. Alex Ersten attended the sixth district meeting at Newport. Mrs. Platt and Mrs. Packard reported on the meeting.

The Auxiliary voted to give \$5 to the Chelsea Community Chest and \$5 to the National Home Children's Christmas party.

Imogene Slocum, Mary Kay Slocum, Ruby Bauer and Faye Bauer were appointed to the Oct. 25 ing will be held at the Rebekah Hall at 8 p.m.

## Jennifer Lane Featured Twirler At EMU Band Day

Jennifer Lane, daughter of Mr. and Mrs. Charles Lane, a baton twirler with the Chelsea High school band, was chosen to be one of four featured twirlers during the half-time show at the Eastern Michigan University Band Day Saturday, Oct. 9.

Jennifer was chosen following an unannounced competition held prior to the opening of the game.

Twelve High school bands participated in the band day events. Chelsea was the only high school featured in a post-game performance.

According to band director Warren Mayer, a good-sized crowd remained in the stands for the show. The band left Chelsea at approximately 8:30 a.m. Saturday, and returned around 5 p.m. "It was a good day," Mayer said.

At the Chelsea Band Boosters meeting at 8 p.m. tonight in the high school band room, video tapes of the post-game performance will be shown.

## Personal Notes

Mrs. Mary Clark and son Dean entertained Mr. and Mrs. Thomas Lancaster, and their daughter and son, and Mr. and Mrs. John Steigwald and daughter, Beth, at dinner Saturday, Oct. 9.

## Magic Mirror Beauty Salon

Open Monday thru Friday 9 a.m. to 9 p.m.  
Saturday, 8 a.m. to 3 p.m.  
PHONE 665-0816



**FARM BUREAU QUEEN:** Mary Niehaus, 17, daughter of Mr. and Mrs. John H. Niehaus, was crowned Washtenaw County Farm Bureau Queen before an audience of more than 300 Washtenaw County Farm Bureau members at their annual meeting last Wednesday night. Mary will represent Washtenaw county at the State Farm Bureau meeting in Grand Rapids Nov. 8 through 10. The Chelsea High school senior plans a nursing career.

## Mary Niehaus Chosen Farm Bureau Queen

Mary Niehaus, 17, daughter of Mr. and Mrs. John H. Niehaus, 3590 Fletcher Rd., was chosen Washtenaw County Farm Bureau Queen at the Washtenaw County Farm Bureau annual meeting held last Wednesday night.

The vivacious Chelsea High school senior, nominated by both the Never Rest Farmers and Rogers Corners Farm Bureau, topped 10 contestants to win the honor.

Mary is a member of National Honor Society, Girls Athletic Association, Future Homemakers of America, Ski Club, and the Wide-Awake 4-H club. She also plays in the OHS marching and concert bands, and sings in the high school choir.

Mary will represent Washtenaw county at the State Farm Bureau meeting to be held in Grand Rapids, Nov. 8 through 10.

## Easter Lily Blooming

Mrs. A. J. Hale, 228 Buchanan, has an Easter lily blooming in her yard.

The confused plant was given to her by her children last April, and produced three buds this fall. After one bud was destroyed, apparently by the cold, Mrs. Hale cut the plant in a pot, and keeps it outside only in the day time.

## VIVIANE WOODARD COSMETICS

475-8785  
Dorothy Ortring, Director

## TROOP 58

We had our first meeting on Sept. 27, in the Methodist church. We took an interest poll and played get-acquainted games.

On Oct. 4, we opened with a flag ceremony, then divided into patrols according to interests. The "Paint Box" patrol is learning arts and crafts. The "Flying Needles" patrol is learning to knit and crochet. The "Tape Measures" patrol is learning about sewing.

On Oct. 9, we helped fold barbecue boxes for the Jaycees. On Oct. 11 we opened with a flag ceremony, and then had treats brought by Terry Cameron. Then we went to our patrols to take dues and start on our projects.

We closed with taps and the squeeze.

## TROOP 169

Monday, Oct. 11, 20 girls from Brownie Troop 169 visited the cider mill in Dexter. We had five mothers help us. We received a glass of cider and an apple.

Jill Updegraff, scribe.

**For Your Engagement**

Choose a Keepsake diamond ring. Keepsake's famous guarantee of perfect quality, permanent registration and protection from loss assures you lasting satisfaction. Your Keepsake will be the perfect symbol of the love you share . . . for all time.

REGISTERED **Keepsake** DIAMOND RINGS

LAVIER \$500 ALSO \$250 TO \$300  
ELLIOTT \$275 WED RING 75  
FAIR HAVEN \$200 WEDDING RING \$2.50

**WINANS JEWELRY**  
Rings enlarged to show detail. Trade-Mark Reg.

## Jaycettes Race Cut-Off Date on Coupons for Kidney Machine

Chelsea Jaycee Auxiliary members have launched an all-out drive to complete their collection of Betty Crocker coupons. The coupons are used to purchase life-saving kidney machines for the Michigan Kidney Foundation Loan Closet.

Because of a decision by General Mills to close the program, the Michigan Jaycee Auxiliaries are racing against time to collect the 300,000 coupons needed to buy one more machine. Donations to the Chelsea program must be in by Nov. 1.

The project began in February, 1969. That year the Michigan Jaycee Auxiliaries hoped to collect enough coupons to buy just one machine.

Two and one-half years later, 28 machines, each valued at \$3,000, have been obtained. Chelsea residents have given the program outstanding support, donating some 51,700 coupons since the inception of the program.

Coupons for the program may be deposited in the "Do Something" canisters in Chelsea Drug store, or Stop & Shop, or residents may call Anne Steinaway, 475-2923 to arrange a pick-up or delivery time. The coupons do not need to be clipped or sorted.

"We need your help," Mrs. Steinaway said. "Please do not throw your coupons away. Every single one brings us one step closer to another machine. Everyone who contributes a coupon can feel she has done something for someone else who needed a machine in order to live."

## POT LUCK

Though the moon is potmarked with countless craters, many immense meteorites fall so infrequently there is little danger to visiting astronauts. A lunar landing site is struck perhaps once in 10 years by an outer-space object no larger than a bird seed.

An off-shoot of the Gulf Stream warms Norway's coast year-round, enabling most inlets to stay ice free, even though they are on the same latitude as Siberia and southern Greenland.

## "Stained Glass" Earrings

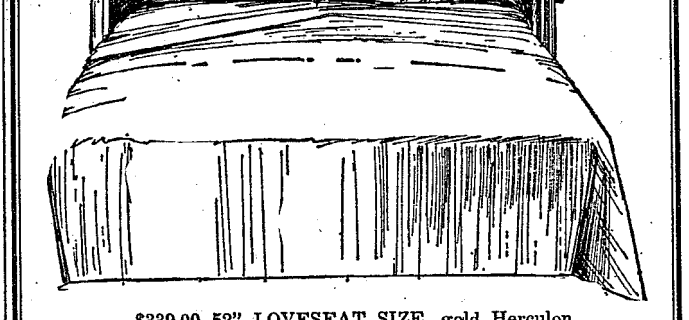
Priced from \$1.00 up  
Great for gifts or just for giving yourself an extra treat. Pierced or pierced look.

## TAILFEATHER BOUTIQUE

"A Fun Place To Shop"  
105 N. Main Ph. Chelsea 475-2512

## SLEEP SOFA SALE

20% OFF  
LAST 3 DAYS!  
SALE ENDS SATURDAY, OCT. 16



\$339.00 52" LOVESEAT SIZE, gold Herculon Tweed, 2-cushion, attached pillow-back Lawson style, kick pleat skirt. \$269.90

\$499.00 62" LOVESEAT SIZE, brown velvet upholstery, traditional button-back style, kick pleat skirt. \$399.90

\$299.95 66" SOFA SIZE, 2-cushion contemporary style, vinyl upholstery, black. \$239.90

\$325.00 68" SOFA SIZE, olive green durable tweed, full size bed, 2-cushion, Lawson style. \$259.90

\$319.95 70" SOFA, black vinyl upholstery, modern tuxedo style, double bed size. \$259.90

\$399.95 72" SOFA, gold Herculon basket weave, high, tuxedo arms, double bed size. \$319.90

\$389.95 72" SOFA, black vinyl, 3-cushion, slope arm contemporary style, queen size mattress. \$309.90

\$479.50 81" SOFA, Herculon plaid in olive and gold tones, contemporary pillow-back style, queen size mattress. \$379.90

\$439.50 82" SOFA, Herculon stripe in rust, brown and white stripe, transitional pillow back design, queen size mattress. \$349.90

## Merkel

HOME FURNISHINGS  
Open Mon. & Fri. Till 9 Ph. Chelsea 475-8621





**ON TARGET:** Max Steger (left), 354 Washington, and Jim Taylor, 228 Park, started the 1971 duck hunting season with a bang Wednesday, Oct. 6. The pair, hunting on a small lake north of Chelsea, bagged one Canada goose and two ducks in less than two hours. Discouraged by the cold, rainy weather, they returned home with their kill at noon. The goose, the first bird downed, was banded in Kingsville, Ont., Canada. Steger and Taylor say they will return the band.

## Stray Animals Make Wild Horse Opera

You might call it a horse opera, but Patrolman Lenard McDougall of the Chelsea Police Department might call it something else.

Chelsea police received reports of three horses running at large in the village at approximately 11:45 Sunday night.

McDougall was sent to investigate.

He proceeded to the intersection of Madison and Jefferson where the horses had first been seen. They weren't there, of course.

Meanwhile, back at the station, more phone calls of sightings were coming in. McDougall was sent by radio first to the Flanders St. area, and then to the Chelsea Medical Center.

And there they were, a horse and two ponies. But seeing a horse isn't the same thing as catching one, and while McDougall got a rope on one of the ponies, the other pony and the horse raced away.

McDougall tied the pony to the back of his patrol car and drove—at a sedate pace—toward the village garage.

Enter Gary Piatt, 16631 Waterloo Rd., Grass Lake, who spied the patrol car with the pony tied to it at the intersection of Van Buren and Main. Naturally curious, Piatt stopped McDougall, and then volunteered

to deliver the horse to the garage. McDougall resumed his round-up.

Mr. and Mrs. Frank White, 116 N. East St., joined in the chase, after McDougall had received radio reports that the horses had been seen in that neighborhood.

White spotted the horse and pony on Van Buren St., but when the three tried to approach them, the horses again sped away. But this time, White was in hot pursuit.

As White ran after the horses, Mrs. White and McDougall lost track of him in the darkness.

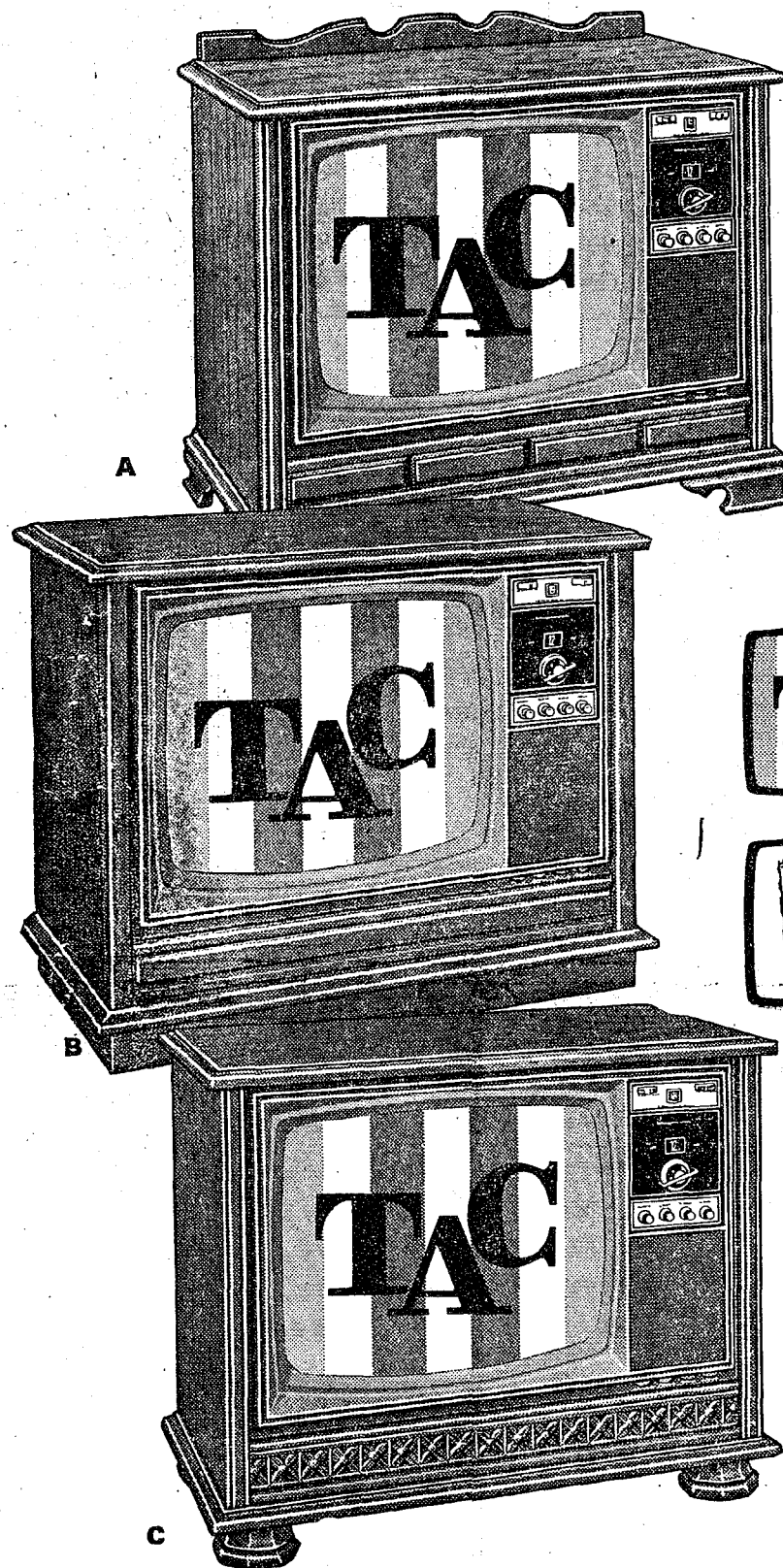
Loren Keezer, 811 S. East, joined White in the chase, and the two finally trapped both strays on the McKinley St. bridge. Keezer, White McDougall and Mrs. White joined forces again on the corner of Dewey and Howard and White volunteered to take pony and horse to the garage, where all three were held until their owner picked them up. In all the confusion, someone released the horses without obtaining the owner's name!

### NUTRITION NONSENSE

According to health experts, one person in 10 spends \$50 a year on unnecessary vitamins and health foods, a form of nonsense which costs \$500 million a year.

# 8<sup>TH</sup> ANNIVERSARY VALUES FROM MAGNAVOX

CELEBRATING LEADERSHIP and EXCELLENCE IN ELECTRONICS SINCE 1911



Introducing  
three new  
**BIG-SCREEN  
COLOR CONSOLES**  
with...

### TOTAL AUTOMATIC COLOR

... the *complete* electronic system that lets you kick the bothersome TV tuning habit... by *automatically* keeping flesh tones natural and pictures sharp—when you switch channels or when the scene changes, TAC will always remember to give you a perfectly-tuned, precise 23" diagonal measure picture—*instantly* and *automatically*—on every channel, every time! Set once and forget it!

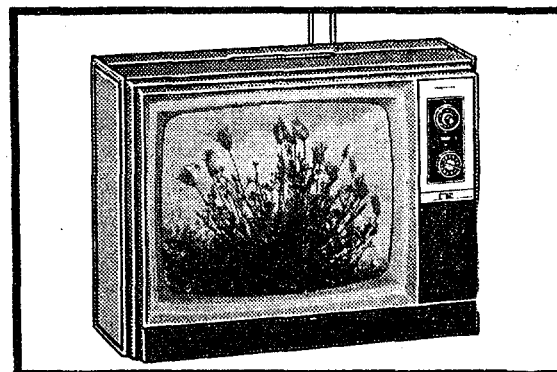
**Magna-Power Chassis**—use predominately solid-state components for improved performance and increased reliability. 3 I.F. Stages and Keyed AGC assure optimum reception—even under adverse conditions. Greater reliability, too.

### YOUR CHOICE OF STYLES

# \$549

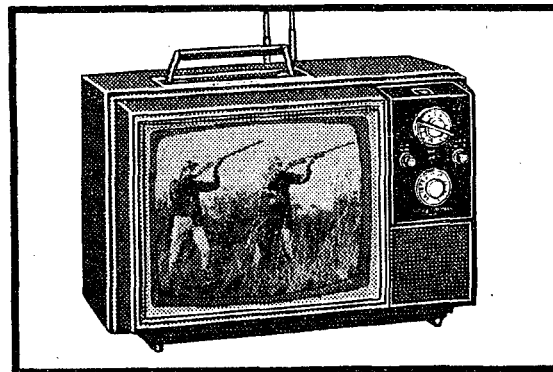
Truly beautiful to see—on or off! A. Early American—model 7324. B. Contemporary—model 7322. C. Mediterranean styling—model 7326. See them... and *all* the special Magnavox Anniversary values... including Stereo Combination Offers you can't afford to miss! Come in today.

Come in... also see our many other regularly-priced Magnavox Color Television Values.



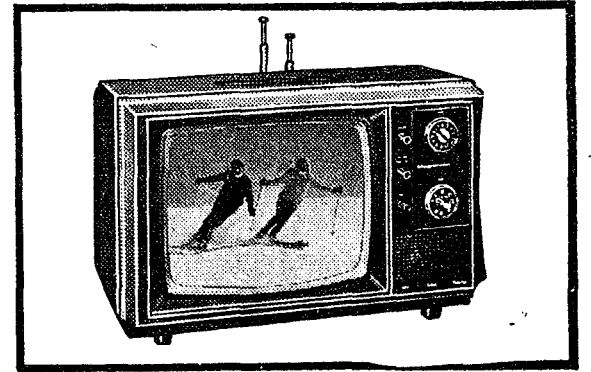
Simulated TV picture

Enjoy 18" diagonal measure pictures—at a very modest cost. This exceptional Magnavox, model 6270, offers such quality features as telescoping dipole antenna, convenient carrying handle, plus the Bonded Circuitry Magna-Power Chassis with Keyed AGC. It's perfect... anywhere! **\$349**



Simulated TV picture

Enjoy 14" diagonal measure pictures—at a very modest cost. This exceptional Magnavox, model 6226, offers such quality features as telescoping dipole antenna, convenient carrying handle, plus the Bonded Circuitry Magna-Power Chassis with Keyed AGC. It's perfect... anywhere! **\$279**



Simulated TV picture

Enjoy 12" diagonal measure color pictures—at a very modest cost. This exceptional Magnavox, model 6112, offers such quality features as telescoping dipole antenna, convenient carrying handle, plus the Bonded Circuitry Magna-Power Chassis. It's perfect for bedroom, kitchen or den! **\$269**

## SPECIAL

thru Wednesday, Oct. 20, 1971

# BRAZIER BURGER & LARGE SHAKE

# 89<sup>c</sup>

Home of fine Brazier foods



901 S. MAIN ST., CHELSEA PHONE 475-2677

# HEYDLAUFF'S

112 N. Main St., Chelsea

(Formerly Frigid Products)

Phone GR 9-6651